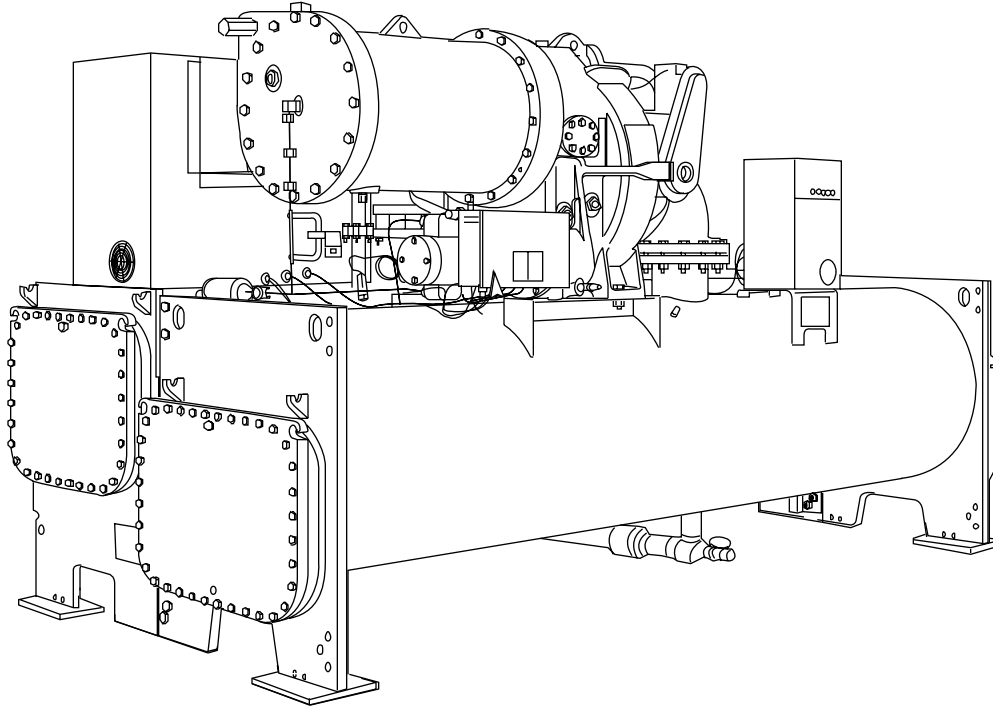


**19XL FRAME SIZE 2, 3, 4 & 5 COMPRESSORS
WITH FRAME 4 & 5 COOLERS/CONDENSERS**



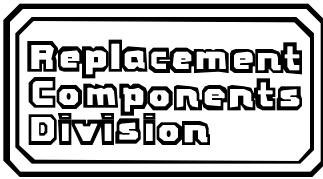
HOW TO USE THIS CATALOG

1. THIS CATALOG PRESENTS THE MOST COMMONLY USED SPECIFIED PARTS FOR THE STANDARD 19XL CENTRIFUGAL REFRIGERATION MACHINE AND IS NOT APPLICABLE TO ANY SPECIAL ORDER MACHINES. (CONTACT CARRIER WITH MACHINE SERIAL NUMBER FOR ANY SPECIAL ORDER UNIT PARTS.)
2. OCCASIONALLY, DUE TO LIMITATIONS OF ILLUSTRATIONS USED, A PART MAY NOT BE ILLUSTRATED. THESE PARTS ARE IDENTIFIED BY "N" IN THE COLUMN NEXT TO THE ITEM NUMBER.
3. THE FOLLOWING PARTS ARE NOT LISTED IN THIS CATALOG.
 - A. IMPELLERS, SHROUDS, DIFFUSERS
 - B. COMPRESSOR MOTOR (ROTOR & STATOR)
 - C. EVAPORATOR TUBE PART NUMBERS
 - D. CONDENSER TUBE PART NUMBERS

IF ANY OF THESE PARTS ARE REQUIRED, CONTACT YOUR CARRIER REPRESENTATIVE WITH THE MODEL AND SERIAL NUMBER OF YOUR MACHINE.

4. POSITIVE IDENTIFICATION OF YOUR MACHINE TO PROPERLY SELECT PARTS MAY BE DONE BY REFERRING TO THE MACHINE NAME PLATE. SEE SIGNIFICANCE CHART, PG. 2



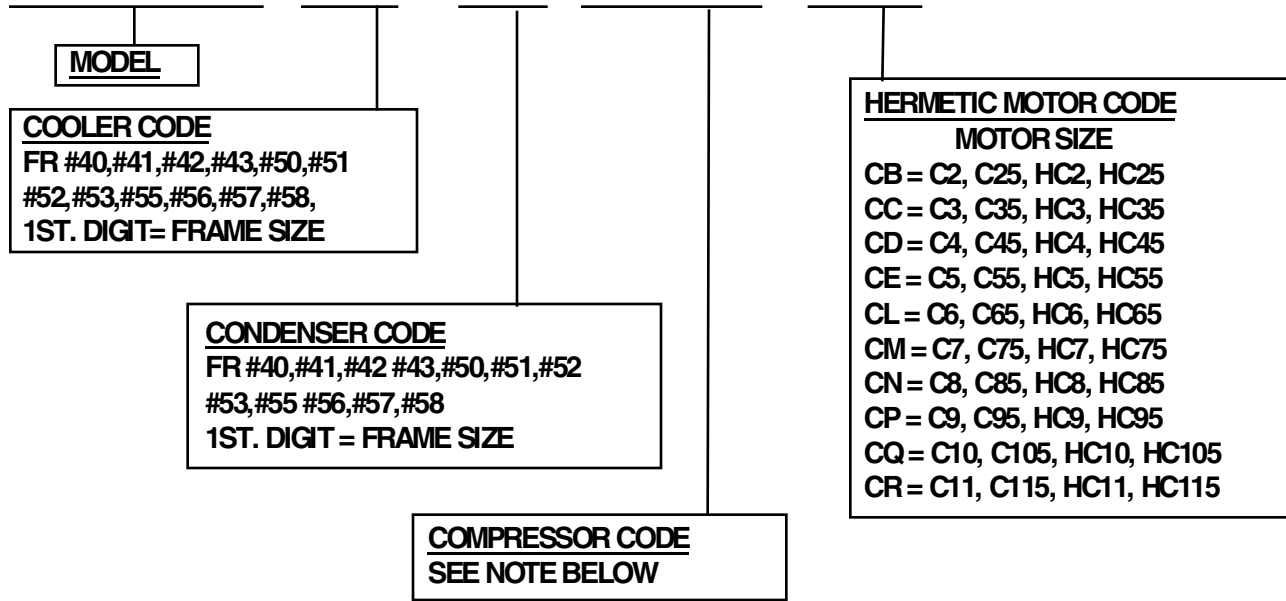


**HERMETIC CENTRIFUGAL
LIQUID CHILLER
(R-22 & R134A)**

19XL

MODEL NUMBER SIGNIFICANCE CHART

1 9 X L 4 1 4 3 5 3 8 C B



IMPORTANT COMPRESSOR CODE NOTE:

EARLIER COMPRESSORS USED COMPRESSOR CODE NUMBERS STARTING WITH A TWO OR A THREE. THESE NUMBERS WERE LATER CHANGED TO BEGIN WITH A FOUR OR A FIVE. THE OLD COMPRESSOR CODE NUMBERS CAN BE MATCHED TO THE NEW CODE NUMBER FOR SERVICE PARTS SELECTION USING THE CHART BELOW. (NEW CODE NO. /OLD CODE NO.)

410 / 223	425 / 334	440 / 253	455 / 364	470 / 283	485 / 394	518
411 / 224	426 / 335	441 / 254	456 / 365	471 / 284	486 / 395	519
412 / 321	427 / 336	442 / 351	457 / 366	472 / 381	487 / 396	528
413 / 322	428	443 / 352	458	473 / 382	488	529
414 / 323	429 / 337	444 / 353	459 / 367	474 / 383	489 / 397	538
415 / 324	430 / 243	445 / 354	460 / 273	475 / 384	490 / 203	539
416 / 325	431 / 244	446 / 355	461 / 274	476 / 385	491 / 204	548
417 / 326	432 / 341	447 / 356	462 / 371	477 / 386	492 / 301	549
418	433 / 342	448	463 / 372	478	493 / 302	558
419 / 327	434 / 343	449 / 357	464 / 373	479 / 387	494 / 303	559
420 / 233	435 / 344	450 / 263	465 / 374	480 / 293	495 / 304	568
421 / 234	436 / 345	451 / 264	466 / 375	481 / 294	496 / 305	569
422 / 331	437 / 346	452 / 361	467 / 376	482 / 391	497 / 306	
423 / 332	438	453 / 362	468	483 / 392	498	
424 / 333	439 / 347	454 / 363	469 / 377	484 / 393	499 / 307	

Graphics Catalog

Catalog No: RCD-3519-057 (3/99) Rev.

Supersedes: 19.032 & 19.028

Rev.

Note: See "Catalog Notes" on last page for explanation of symbolism.

Graphics Page: 2

Litho in U.S.A



Electronic Graphics 19057002



HERMETIC CENTRIFUGAL LIQUID CHILLER (R-22 & R134A)

19XL

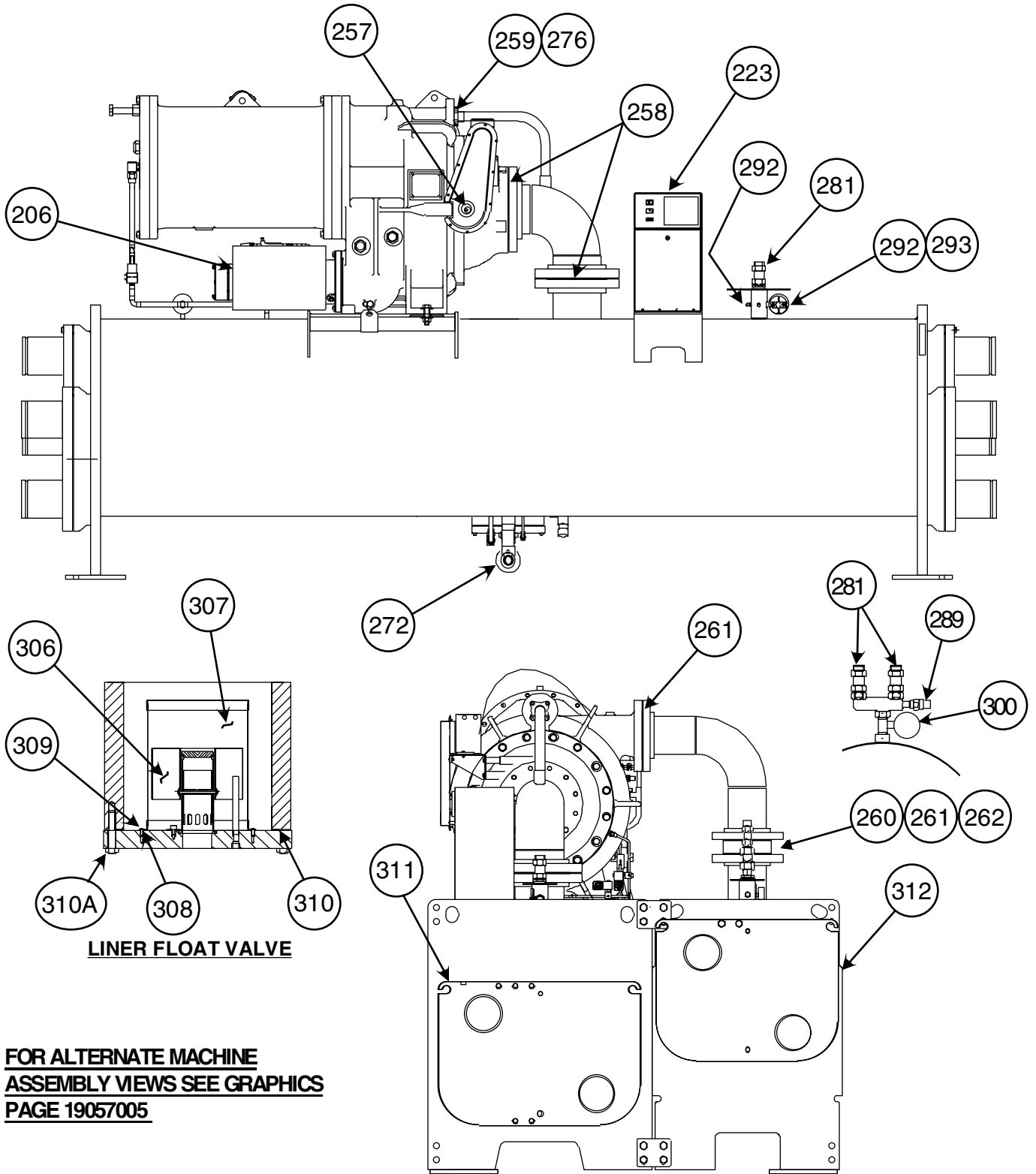
		UNITED TECHNOLOGIES CARRIER	
REFRIGERATION MACHINE		COMPRESSOR #1 MOTOR DATA	
	MODEL NUMBER	SERIAL NO.	VOLTS/PHASE/HERTZ 460/3/60 AC
MACHINE	19XB5353363CQ	XXXXX	RL AMPS 495 LR AMPS Y- 1000
COMP#1	02XB363CQ	XXXXX	OLT AMPS 535 LR AMPS D- 3125
COMP#2			COMPRESSOR #2 MOTOR DATA
UNISHELL			RL AMPS LR AMPS
COOLER	10XB53	XXXXX	OLT AMPS LR AMPS
CONDENSER	09XB53	XXXXX	
ECONOMIZER			
STORAGE TK.			
STORAGE TK.			
REFRIGERANT	1450 LBS. 658 KGS.	TEST PRESSURE	375 PSI 2586 KPA
R-22/134A	CHARGED	DESIGN PRESSURE	300 PSI 2069 KPA
SAFETY CODE CERTIFICATION THIS UNIT IS DESIGNED, CONSTRUCTED, AND TESTED IN CONFORMANCE WITH THE ANSVASHRAE 15-1989 SAFETY CODE FOR MECHANICAL REFRIGERATION.		CLR. WATER PRESSURE	150 PSI 1035 KPA
		COND. WATER PRESSURE	150 PSI 1035 KPA
MOUNTED STARTER <input type="radio"/> YES <input type="radio"/> NO		UL	ARI
		YES <input type="radio"/> NO	YES <input type="radio"/> NO
		CSA	YES <input type="radio"/> NO
		<small>100501-1154</small>	

MACHINE NAMEPLATE (SAMPLE)

UNITED TECHNOLOGIES CARRIER		<small>MADE IN USA</small>
CENTRIFUGAL COMPRESSOR		
S/N	XXXXX	MODEL 02XB363CQ
TEST PRESSURE (GAGE)	375 PSI	2585 KPa
MAX WORKING PRESSURE (GAGE)	300 PSI	2069 KPa
REFRIGERANT	R 22/134A	
VOLTS AC/PH/HZ	460/ 3 / 60	
RL AMPS 495	LR AMPS Y- 1000	OLT AMPS 535
	D- 3125	

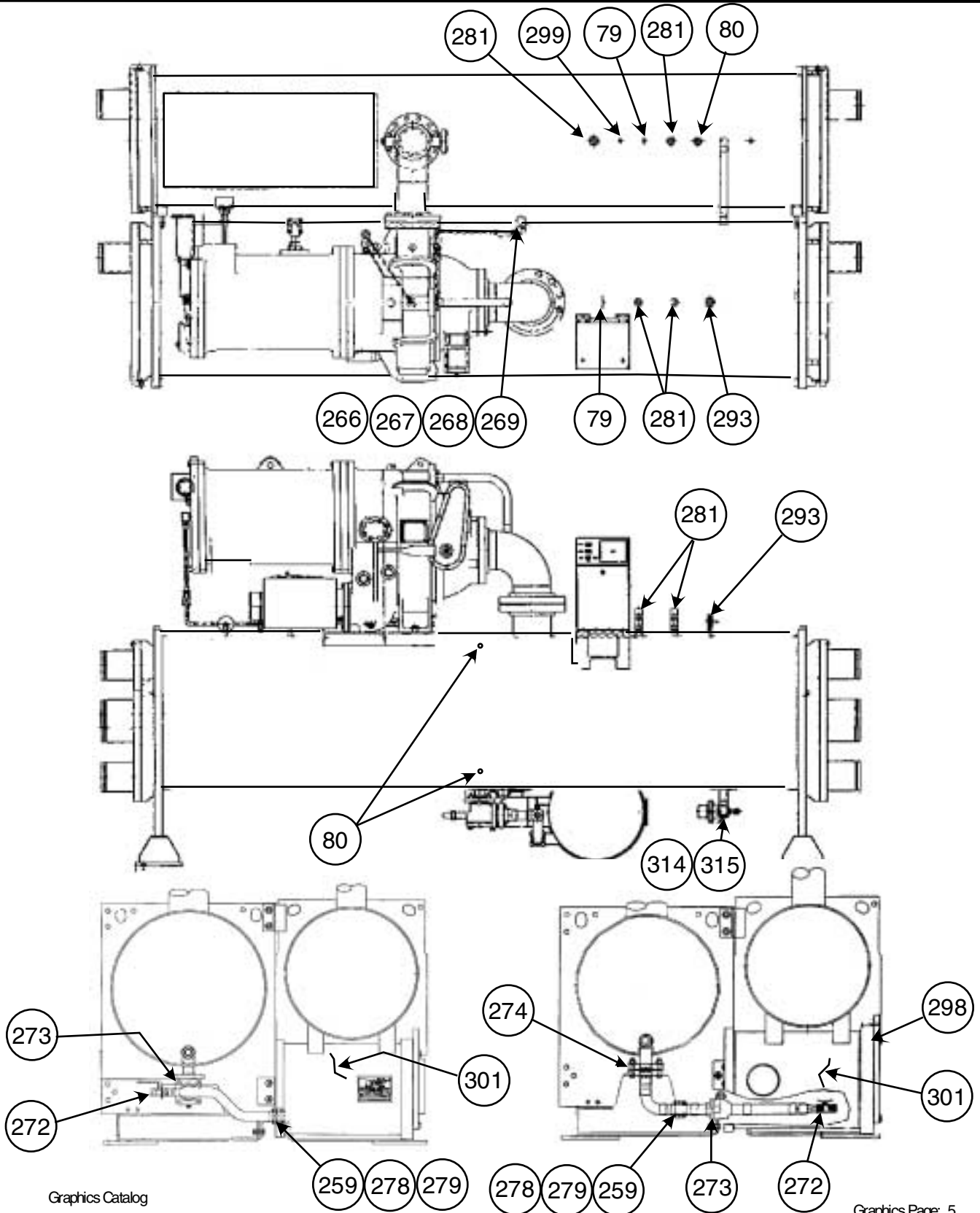
COMPRESSOR NAMEPLATE (SAMPLE)

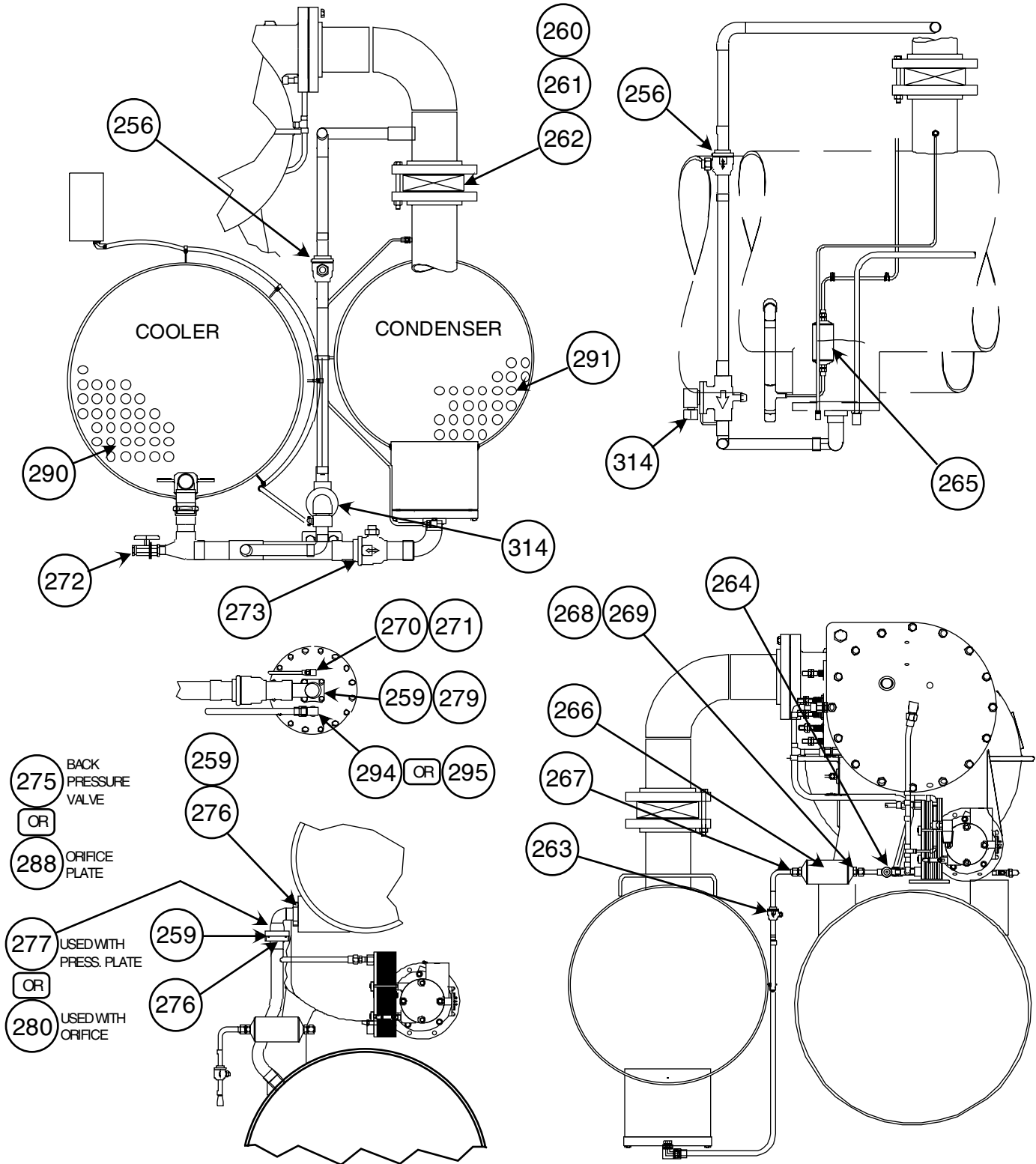




**FOR ALTERNATE MACHINE
ASSEMBLY VIEWS SEE GRAPHICS
PAGE 19057005**





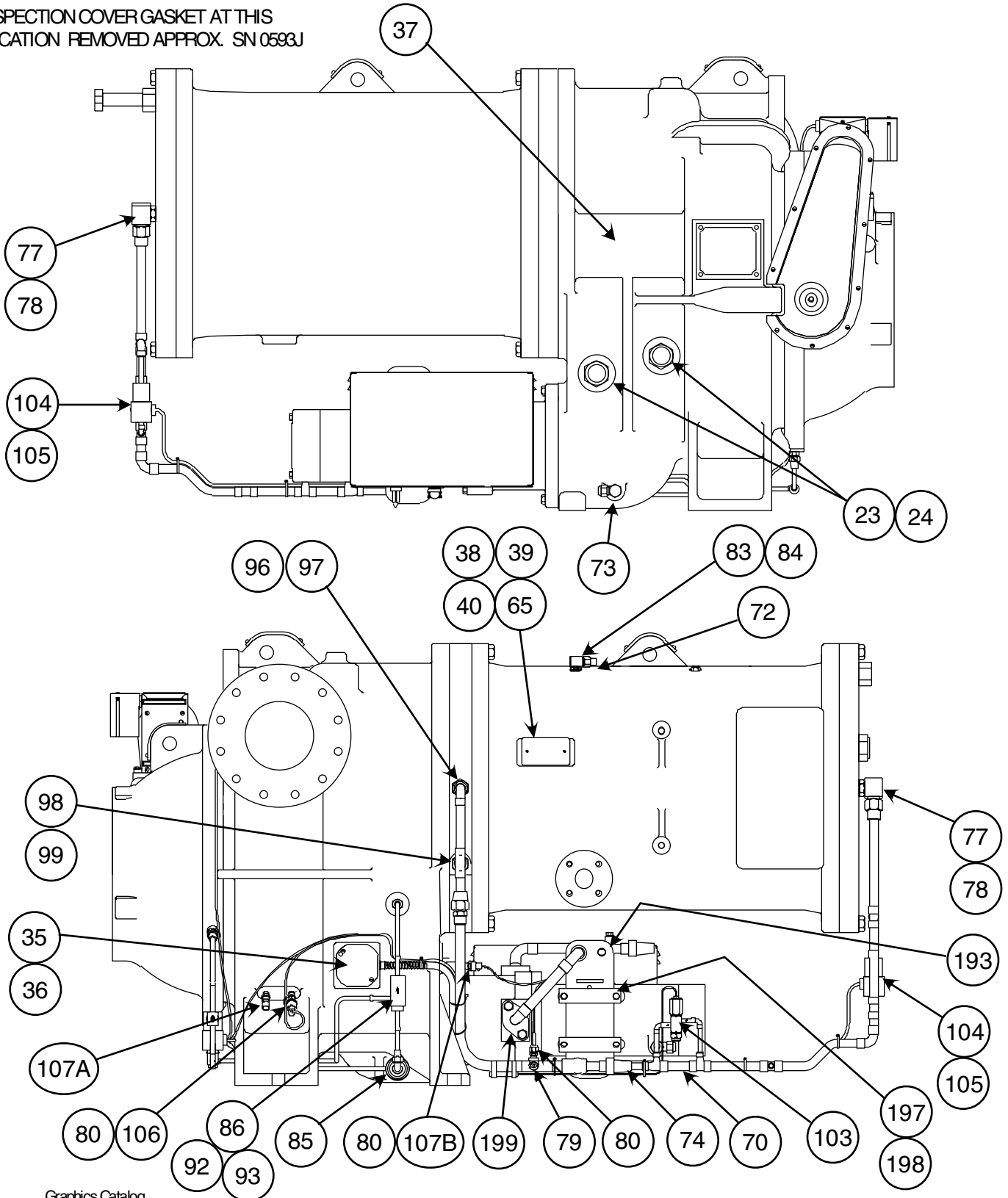


Graphics Catalog
 Catalog No: RCD-3519-057 (3/99) Rev.
 Supersedes: 19.032 & 19.028 Rev.
 Note: See "Catalog Notes" on last page for explanation of symbolism.

Graphics Page: 6
 Litho in U.S.A.



INSPECTION COVER GASKET AT THIS
LOCATION REMOVED APPROX. SN 0593J



Graphics Catalog

Catalog No: RCD-3519-057 (3/99) Rev.

Supersedes: 19.032 & 19.028

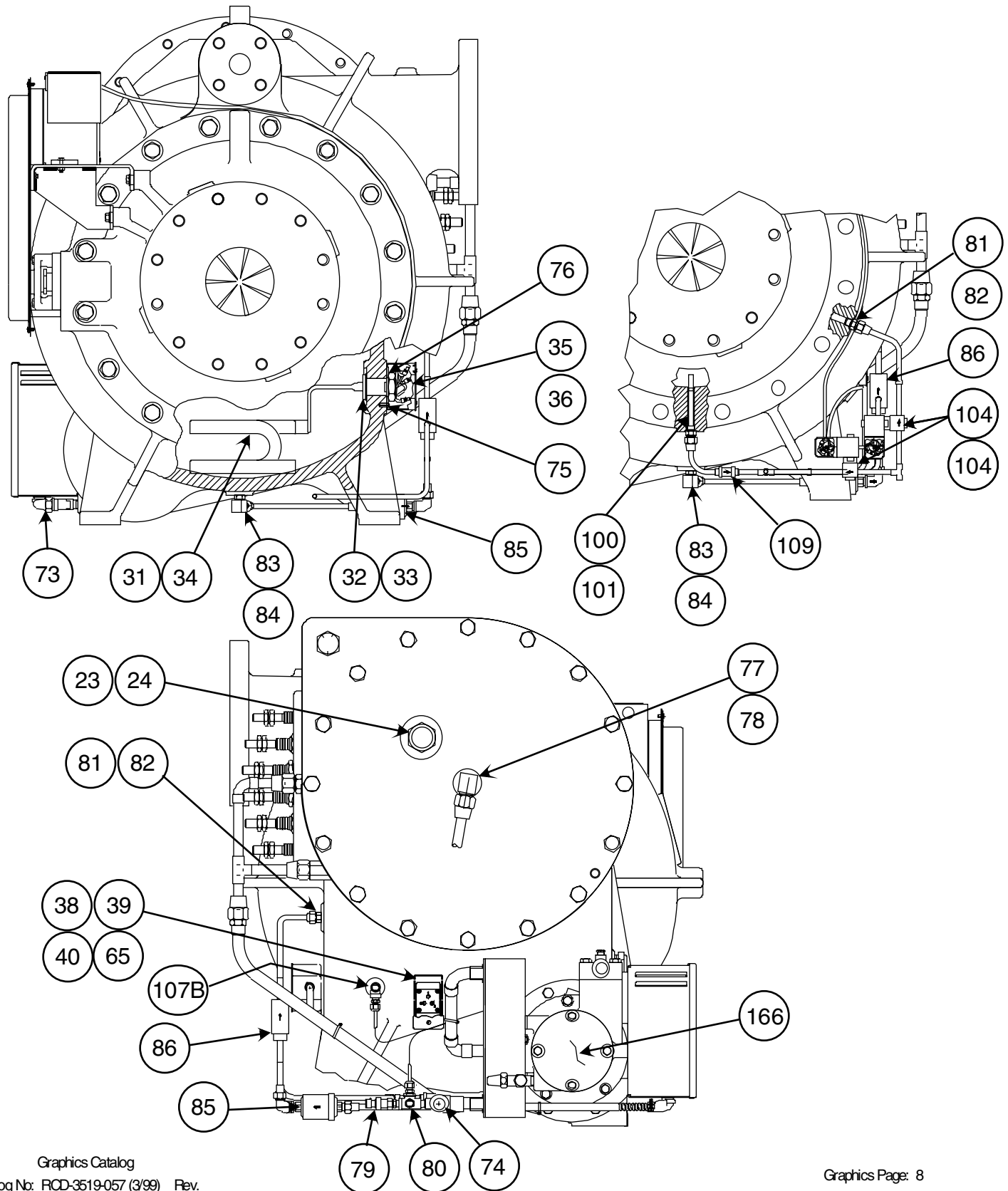
Rev.

Note: See "Catalog Notes" on last page for explanation of symbolism.

Graphics Page: 7

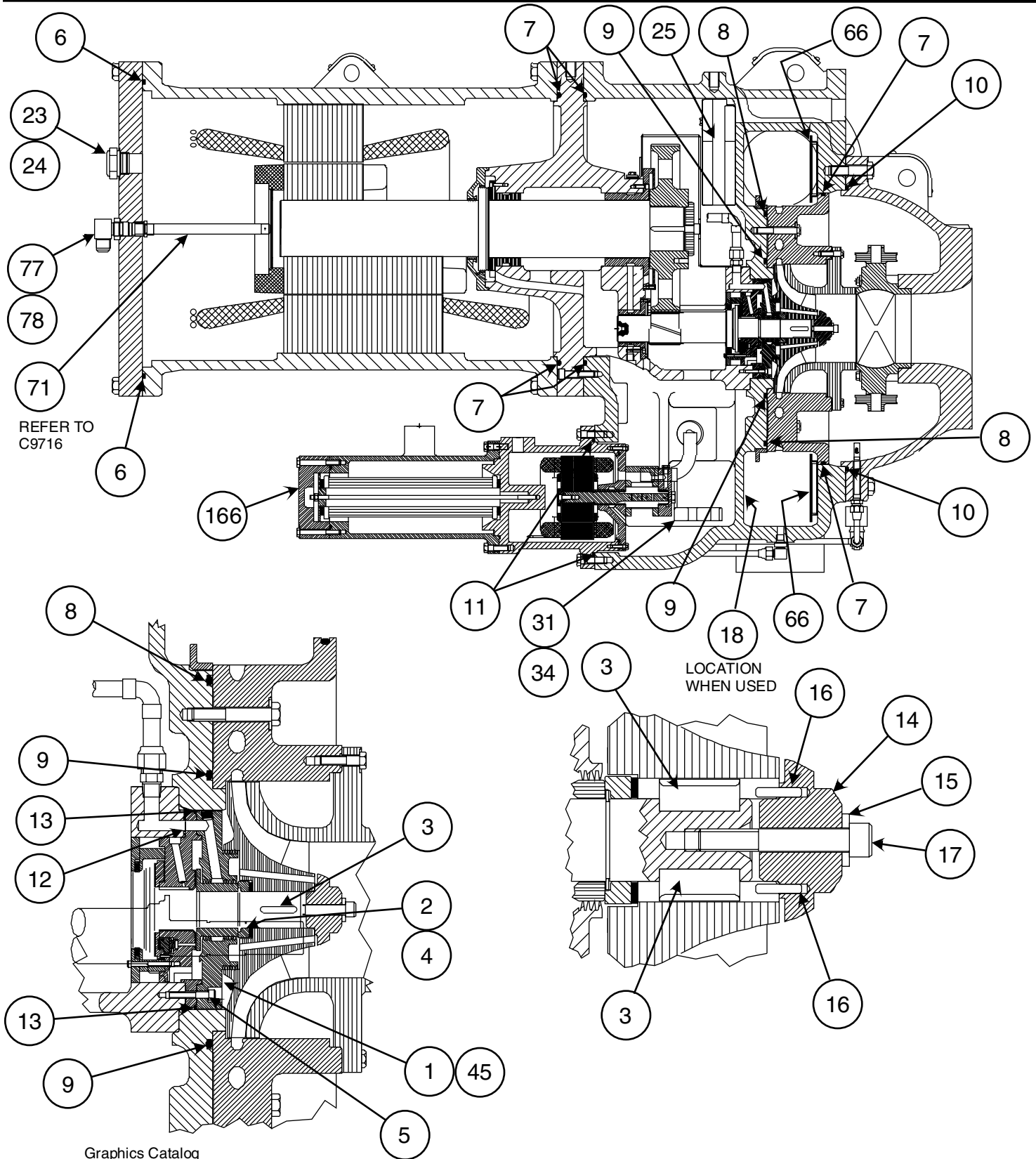
Litho in U.S.A.





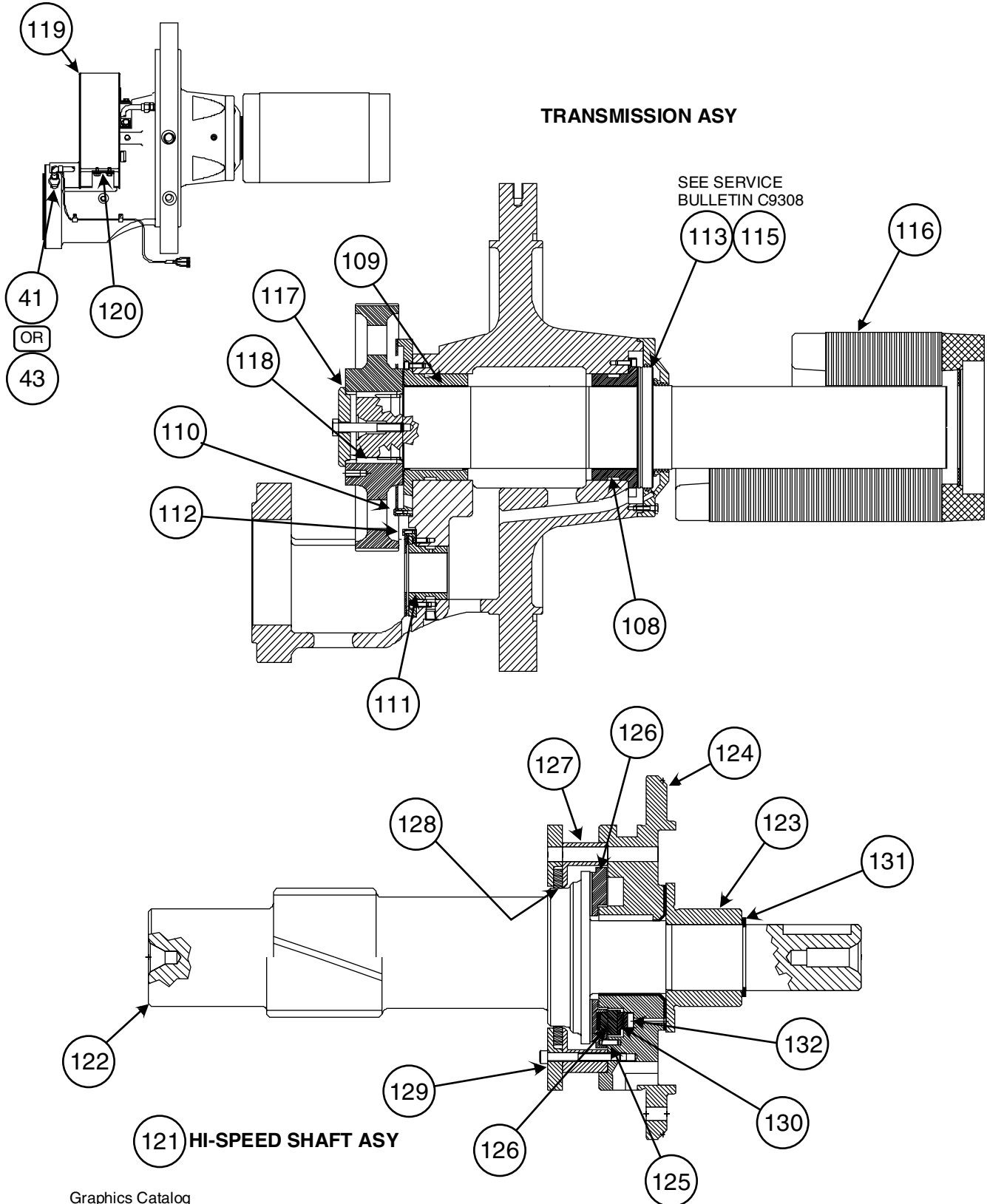
**HERMETIC CENTRIFUGAL
LIQUID CHILLER
(R-22 & R134A)**

19XL



Graphics Catalog
 Catalog No: RCD-3519-057 (3/99) Rev.
 Supersedes: 19.032 & 19.028 Rev.
 Note: See "Catalog Notes" on last page for explanation of symbolism.

Graphics Page: 9
 Litho in U.S.A



Graphics Catalog

Catalog No: RCD-3519-057 (3/99)

Rev.

Supersedes: 19.032 & 19.028

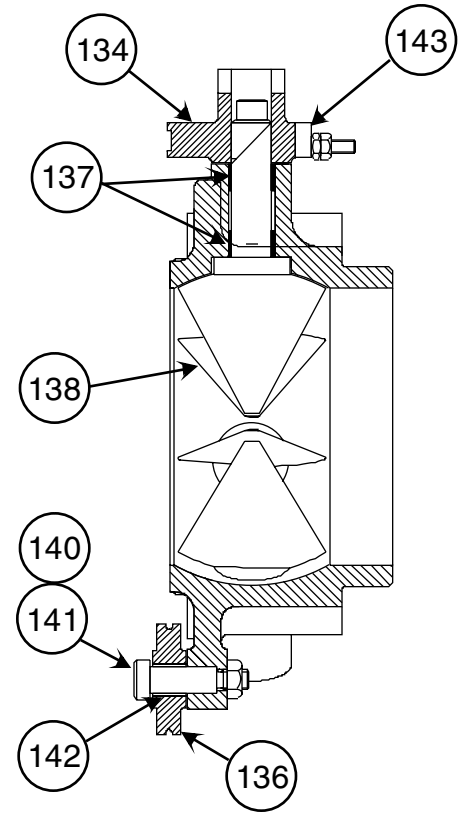
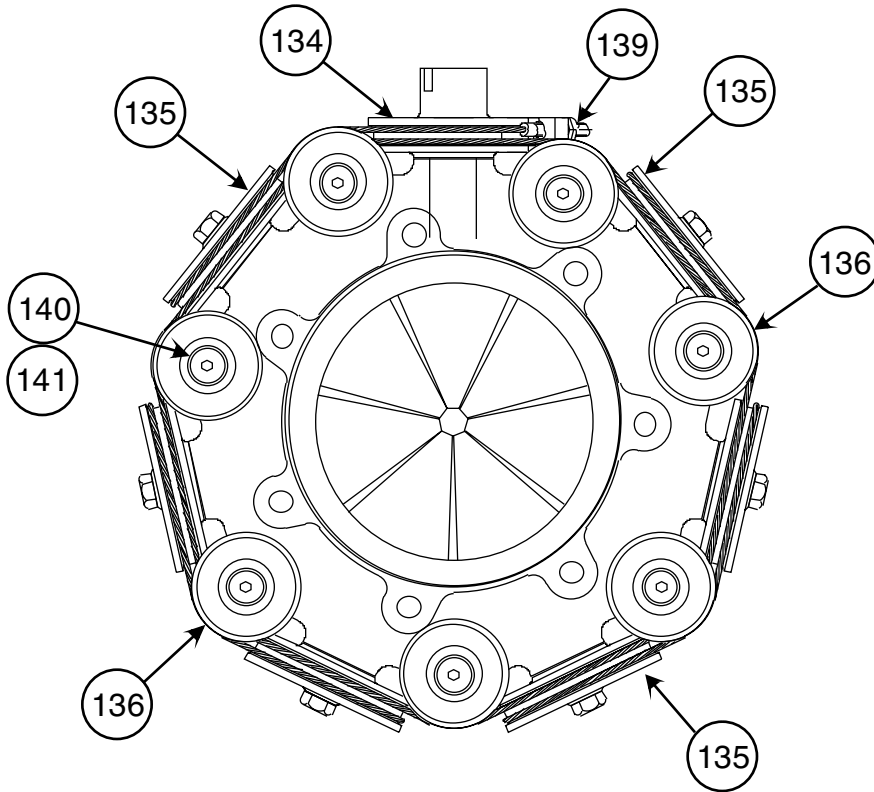
Rev.

Note: See "Catalog Notes" on last page for explanation of symbolism.

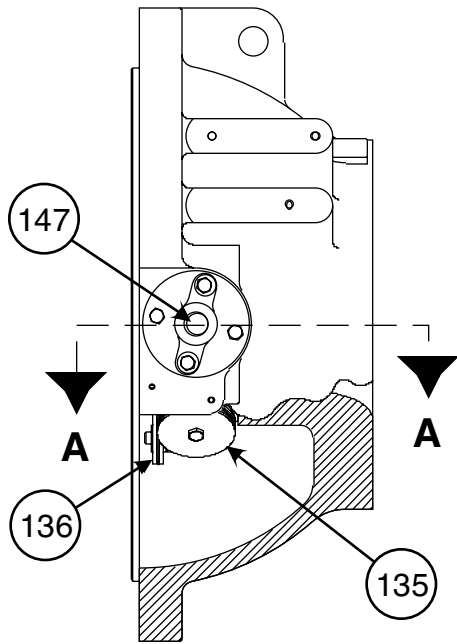
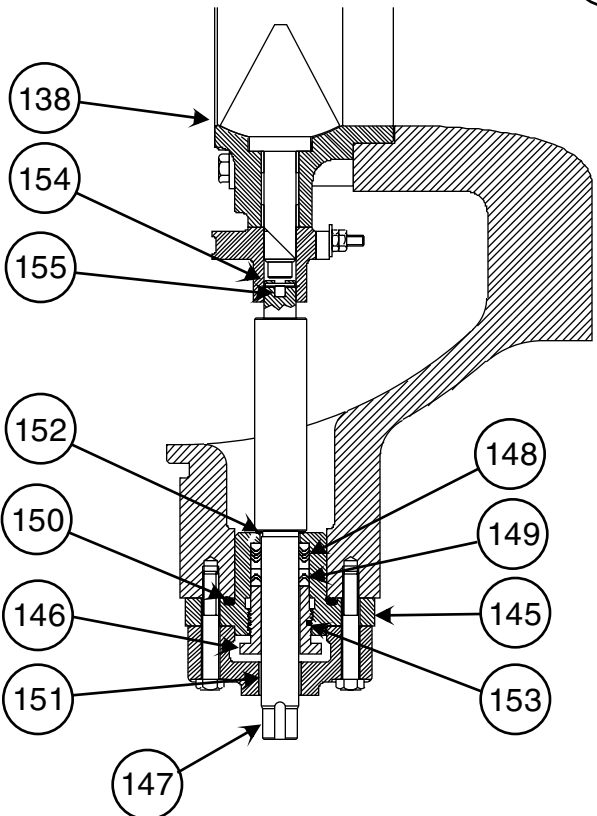
Graphics Page: 10

Litho in U.S.A





133 BLADE RING ASY.



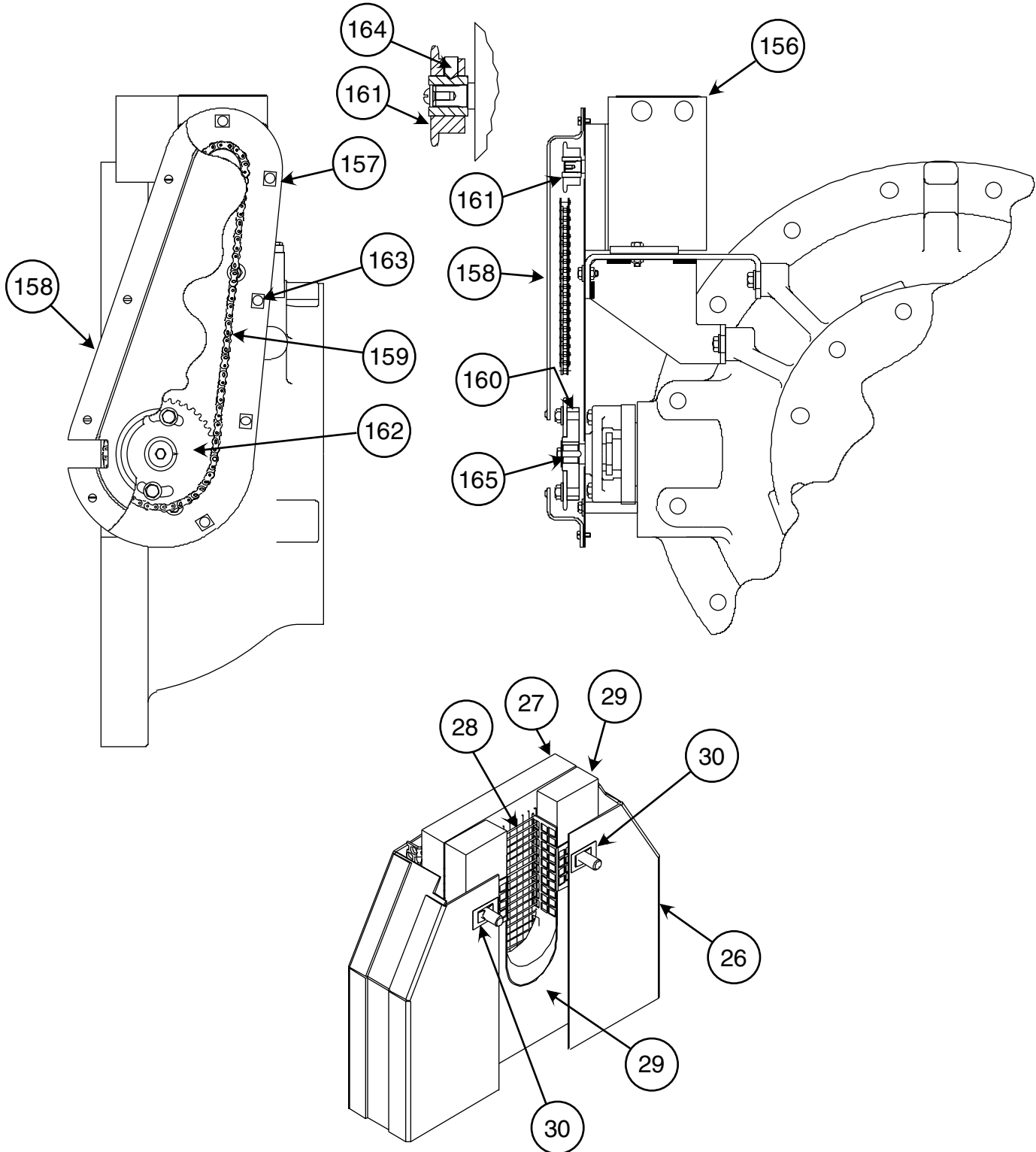
SECTION A-A

Graphics Catalog
Catalog No: RCD-3519-057 (3/99)
Supersedes: 19.032 & 19.028
Note: See "Catalog Notes" on last page for explanation of symbolism.

Rev.
Rev.

Graphics Page: 11
Litho in U.S.A

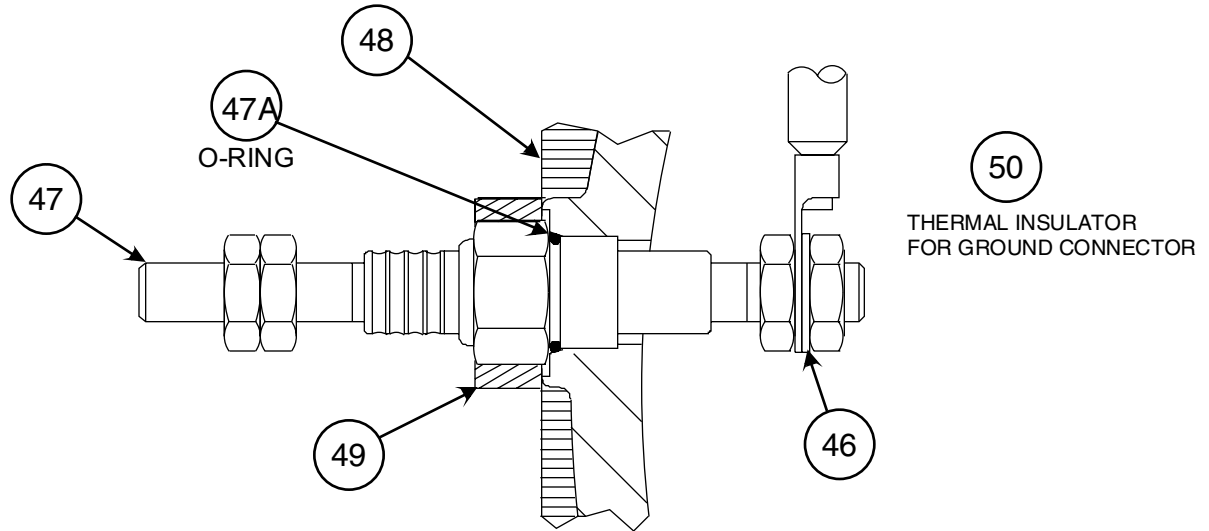




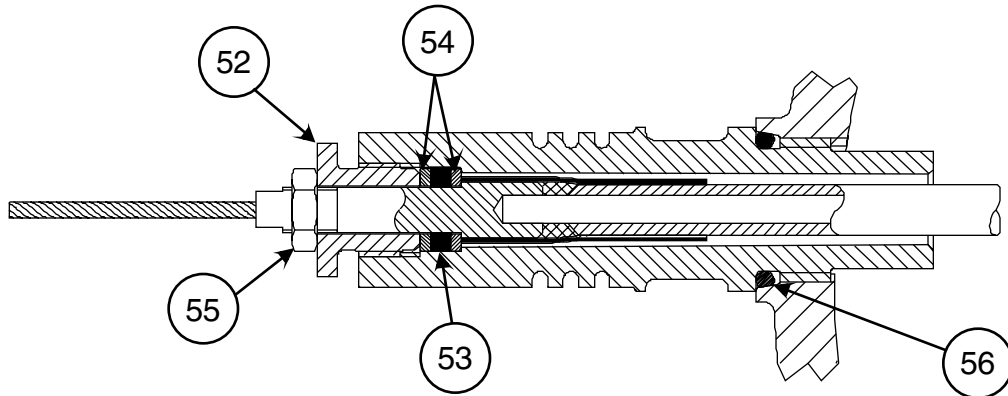
DEMISTER ASY.

Graphics Catalog
 Catalog No: RCD-3519-057 (3/99) Rev.
 Supersedes: 19.032 & 19.028 Rev.
 Note: See "Catalog Notes" on last page for explanation of symbolism.

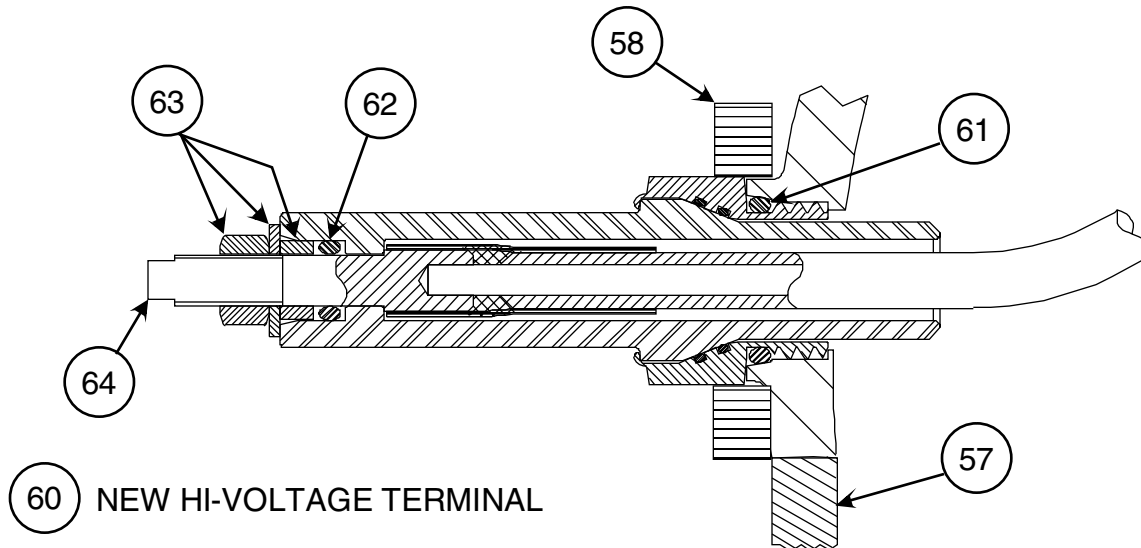
Graphics Page: 12
 Litho in U.S.A



LOW VOLTAGE TERMINAL



OLD HI-VOLTAGE TERMINAL



Graphics Catalog

Catalog No: RCD-3519-057 (3/99)

Rev.

Supersedes: 19.032 & 19.028

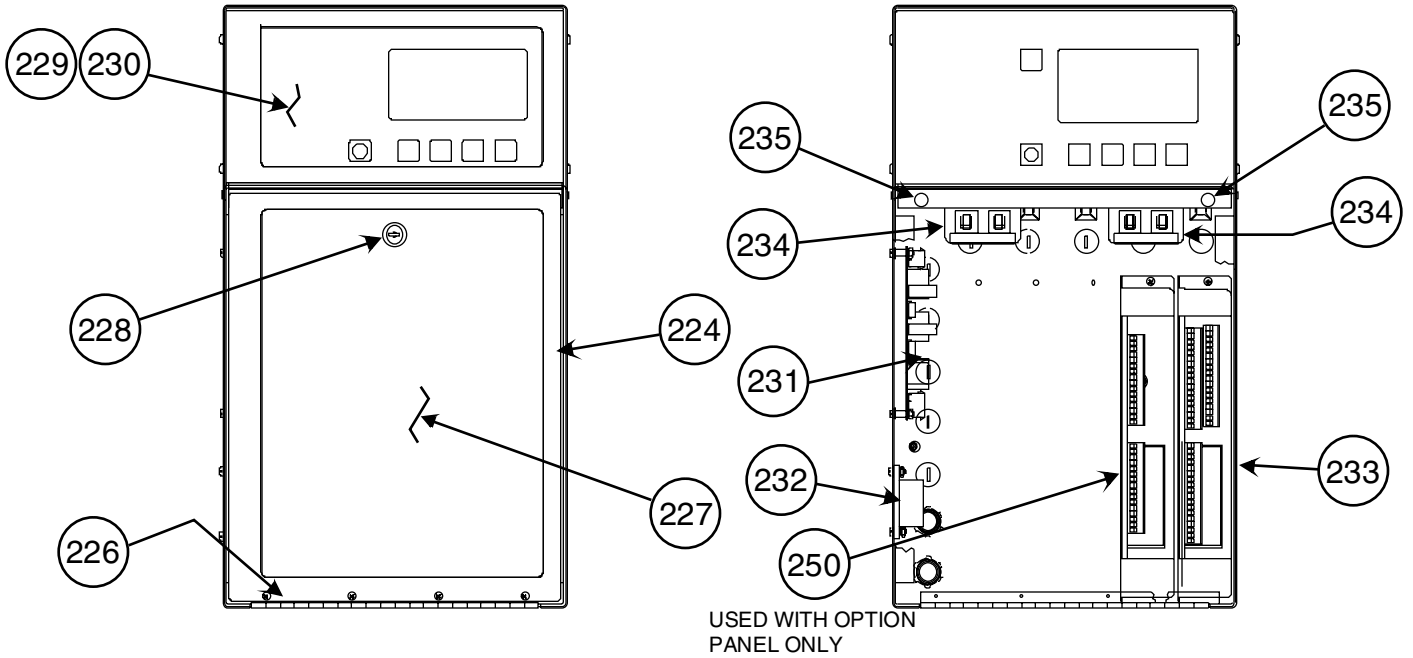
Rev.

Note: See "Catalog Notes" on last page for explanation of symbolism.

Graphics Page: 13

Litho in U.S.A





236 15 WIRE, 5AMP
WIRING HARNESS

CONTROL PANEL ITEM #223

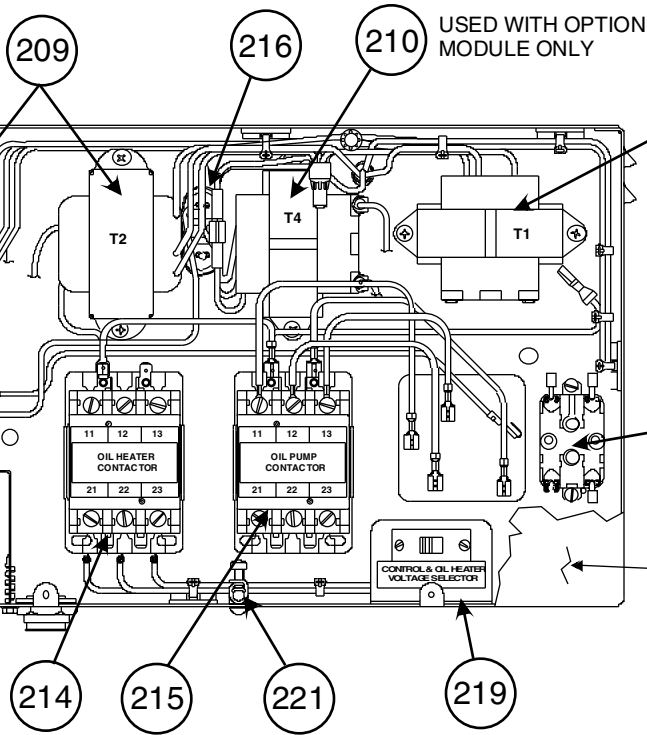
237 RESISTOR WIRE

207

217

218

220 15 WIRE
WIRING HARNESS



POWER PANEL ITEM #206

Graphics Catalog

Catalog No: RCD-3519-057 (3/99)

Rev.

Supersedes: 19.032 & 19.028

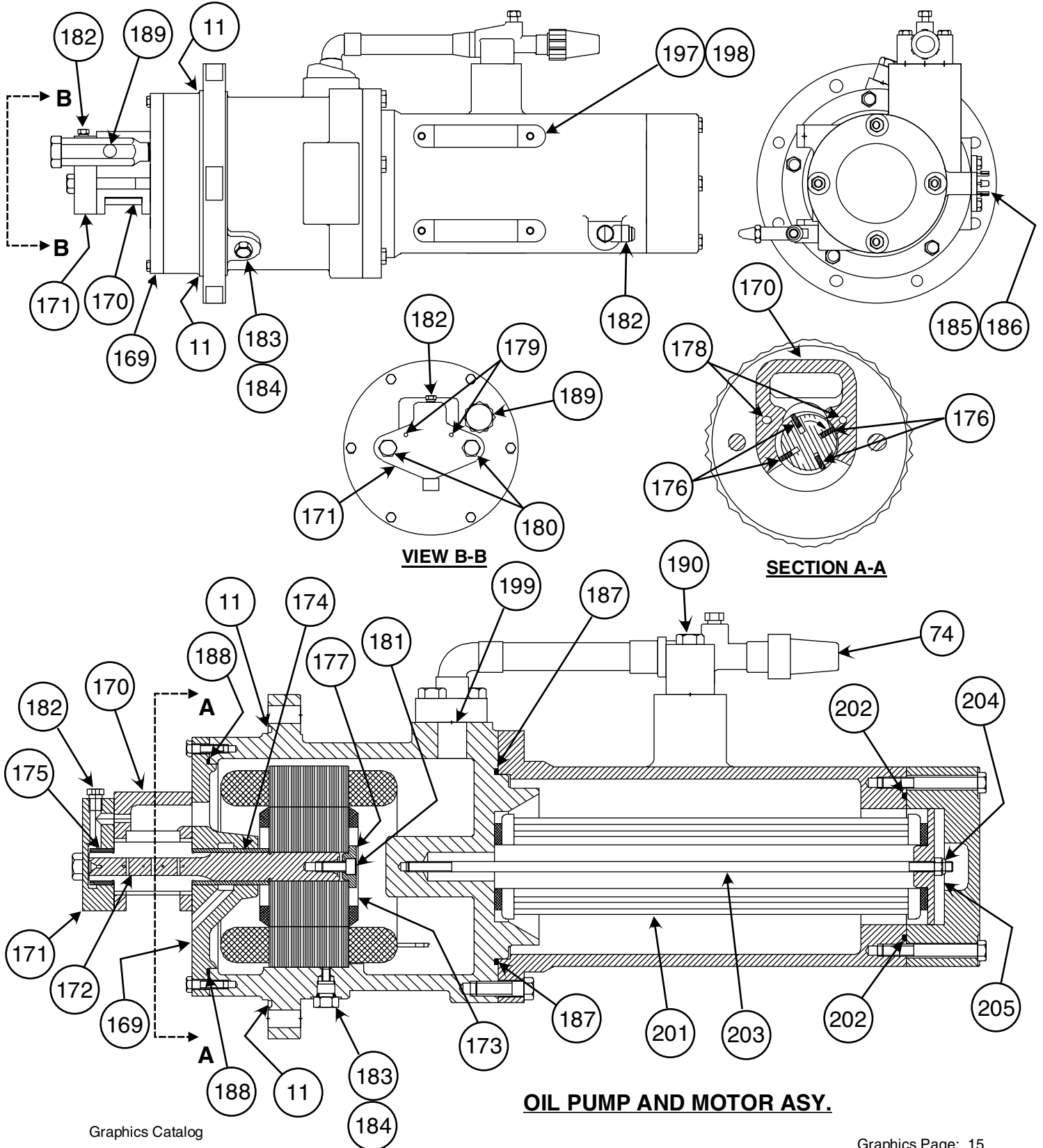
Rev.

Note: See "Catalog Notes" on last page for explanation of symbolism.

Graphics Page: 14

Litho in U.S.A





OIL PUMP AND MOTOR ASY.

Graphics Catalog

Catalog No: RCD-3519-057 (399)

Rev.

Supersedes: 19.032 & 19.028

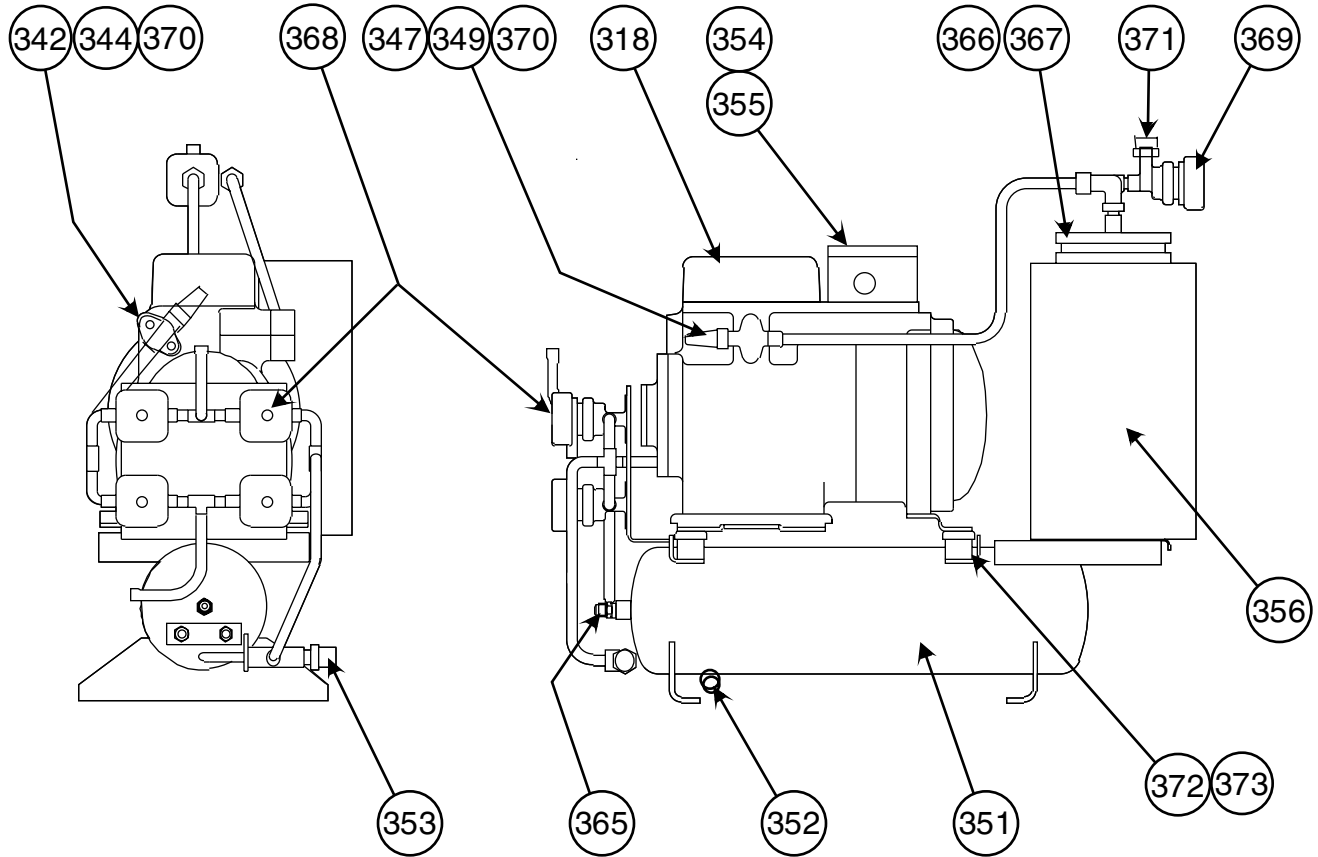
Rev.

Note: See "Catalog Notes" on last page for explanation of symbolism.

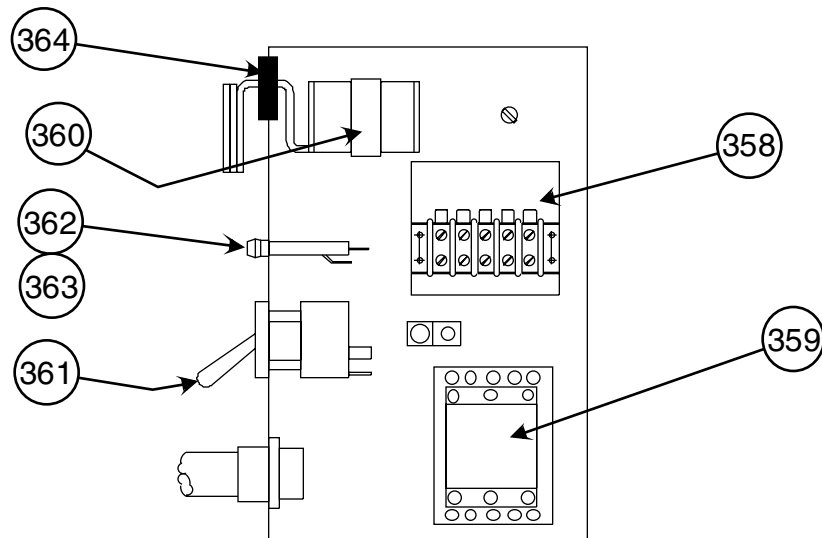
Graphics Page: 15

Litho in U.S.A





PUMPDOWN ASY.



PUMPDOWN CONTROL BOX ASY.

Graphics Catalog

Catalog No: RCD-3519-057 (3/99)

Rev.

Supersedes: 19.032 & 19.028

Rev.

Note: See "Catalog Notes" on last page for explanation of symbolism.

Graphics Page: 16

Litho in U.S.A





HERMETIC CENTRIFUGAL
LIQUID CHILLER (R-22 &
R-134A)

19XL

SIZE: 002 005
SERIES: 0

ITM	PART DESCRIPTION	19XL002-005	
		COMPRESSORS	
COMPRESSOR GROUP			
1	IMPELLER LABRINTH SELECTION NOTE	IMPORTANT! SEE NOTE	
	IMPORTANT NOTE! IF YOU ARE CHOOSING A IMPELLER LABYRINTH FOR A COMPR. WITH A COMPRESSOR CODE BEGINNING WITH A "2" OR A "3" YOU MUST REFER TO SIGNIFICANCE CHART TO PROPERLY SELECT LABYRINTH.		
1A	LABYRINTH,IMPELLER	19XL660008	
	COMPRESSOR CODES USED ON: 2XX,3X1,3X2,3X3,410-414,420-424,430-434, 440-444,450-454,460-464. (X = ANY NUMBER)		
1B	LABYRINTH,IMPELLER	19XL660009	
	COMPRESSOR CODES USED ON: 3X4,3X5,4X5,4X6,470-476,480-486,490-496.		
1C	LABYRINTH,IMPELLER	19XL660010	
	COMPRESSOR CODES USED ON: 3X6,3X7. (PSN4493J) (X = ANY NUMBER)		
1D	LABYRINTH,IMPELLER	19XL660014	
	COMPRESSOR CODE USED ON: 3X6,3X7.(SSN4593J) 4X7,4X8,4X9,5X8,5X9. NOTE: ITEM #1 INCLUDES PIN PLUG (IT #45). LEAVE IT IN.		
2	IMPELLER SPACER	02XB35006801	
3	IMPELLER KEY	(2)	19HR2121042
4	IMPELLER SHIM	02XB35006901	
5	SEALING WASHER (COPPER)	(6)	AU52NA171
6A	O-RING(MTR CVR)(21.50 OD)(PSN3995J)	KK71EW470	
	NOTE: THE KK71EW470 "O" RING WAS USED ON COMPRESSORS USING A CAST END BELL. THIS CAST COVER IS PART # 02XB35001001.		
6B	O-RING(22.50 OD)(MTR CVR)(SSN3995J)	KK71EW471	
	NOTE: THE KK71EW471 "O" RING IS USED ON LATER MODELS WHICH USE A PLATE STEEL END BELL COVER,PART # 02XB35032501."O" RING GROOVE IS NOW IN MOTOR STATOR HOUSING. THIS WAS DONE SSN 3995.(SEPT 1995) (SEE SERVICE BULLETIN C9637)		
7	O-RING (20.50"O.D.)	(3)	KK71EW469
8	O-RING (OUTER DIFF) (17.50"O.D.)	KK71EW465	
9	O-RING (INNER DIFF) (10.50"O.D.)	KK71EW449	
10	O-RING (SUCTION HSG) (22.50"O.D.)	KK71EW471	
11	O-RING (OIL PUMP) (8.50"O.D.)	KK71EW268	
12	O-RING (LABY GAS) (.69"O.D.)	KK71EW015	
13	O-RING (LABY/TRANS) (7.50"O.D.)	KK71EW263	
14	NOSE PIECE	02XB35006701	
15	IMPELLER WASHER	02XB05002701	
16	ROLL PIN	(2)	AX14CA096
17	SDC HEAD CAP SCREW 3/8-16	AA44AA237	
	NOTE: SILENCER (IT# 18) WHICH IS NOW OPTIONAL WAS STANDARD ON UNITS BUILT PSN1593J.CURRENT UNITS INCLUDE IT #66 AS THE STANDARD SILENCER.		
18	SILENCER ASSEMBLY (REAR)	02XB34009801	
	INCLUDES: ITEMS 19 - 22		
19 N	SEGMENT ASSEMBLY	(4)	02XB34009901
20 N	SPRING	(16)	02XB35007801
21 N	RING	02XB35007901	
22 N	BUTTON HD.SCREW #10-24	(16)	AA28FR126
23	SIGHT GLASS	(3)	KM36BS162
	INCLUDES: ITEM 24		
24	O-RING	KK71EW920	
25	DEMISTER ASSEMBLY	02XB34004801	
	INCLUDES: ITEMS 26 - 30		
26	DEMISTER HOUSING	02XB34004701	
27	FILTER	02XB35017601	

PARTS LIST CATALOG

PARTS LIST PAGE: 001

CATALOG NO.: REV.
SUPERSEDES: REV.

NOTE: SEE "CATALOG NOTES" ON LAST PAGE FOR EXPLANATION OF SYMBOLISM.



HERMETIC CENTRIFUGAL
LIQUID CHILLER (R-22 &
R-134A)

19XL

SIZE: 002 005
SERIES: 0

ITM	PART DESCRIPTION	19XL002-005		
		COMPRESSORS		
COMPRESSOR GROUP				
28	FILTER SUPPORT (MESH)	02XB35017701		
29	FILTER (NOTCHED)	02XB35017801		
30	SPEED NUT	(2) AS01XD180		
31	OIL HEATER (115/230V-1200 WATT)	02XB05003201		
NOTE: REFER TO SERVICE BULLETIN C9731 FOR HEATER INFORMATION.				
32	SEAL WASHER (INSIDE)(SSN 2593J)	AU29AR481		
33	OIL HEATER GASKET (INSIDE)	19XB680005		
34	HEATER SUPPORT BRACKET	(2) 02XB35002201		
35	BOX EXT RING (OIL HEATER)	HX22FB052		
36	BOX COVER (OIL HEATER)	HX02FB050		
37	INSPECT COVER GASKET (PSN 0593J)	02XB35009001		
37AN	SENSOR,MOTOR TEMP. (WITH REWIND ONLY	32HP500356		
38	HERM TERM.(3 PIN)(THRUST/MTR SENSOR)	(2) HY85FP022		
39	BOX COVER (THRUST/MOTOR SENSORS)	(2) HX08FZ050		
40	RING BOX EXTENSION(THRUST/MTR SENSOR	(2) HX22FS036		
41	THRUST SENSOR ASSEMBLY (PSN1793J)	19XB04004201		
INCLUDES: ITEM 42				
42	SENSOR (2.00" BULB)(PSN1793J)	HH79NZ049		
43	THRUST SENSOR ASSEMBLY (SSN1793J)	19XB04005301		
INCLUDES: ITEM 44				
44	SENSOR (1.38" BULB) (SSN1793J)	HH79NZ044		
45	PIN PLUG (3/8" OD ALUM)(INC IN IT#1)	AX17VP028		
46	SPRING WASHER (LO-VOLT)(INTERNAL)	(6) AU51AS543		
46A	HEAT SHRINK TUBING	(3) LF33MM112		
47	LO VOLTAGE TERMINAL (MOTOR LEADS)	(6) HY85AA062		
47A	O-RING,TERMINAL	KK71EW914		
48	LO VOLTAGE TERM FOAM PAD	19XB05006004		
49	LO VOLT TERM "O" RING (TERM 2,3,4,6)	19XB05006005		
50	THERMAL INSULATOR (1 1/8"OD)	(6) 02XB05001801		
51 N	HI VOLTAGE TERMINAL ASY. (OLD STYLE)	(3) NLA (SEE NOTE)		
NOTE: IF A COMPLETE NEW HI-VOLTAGE TERMINAL ASY IS REQUIRED YOU MUST				
ORDER A NEW CERAMIC TERMINAL 02XB05003001.				
52	NUT,PACKING	02XB35028601		
53	O-RING,OUTER	02XB35028301		
54	RETAINER	(2) 02XB35028701		
55	NUT,JAM	AT14QA311		
56	O-RING,INNER	KK71EW325		
57	HI VOLTAGE TERM FOAM PAD	19XB05006002		
58	HI VOLTAGE TERM "O" RING (TERM 2,3)	(2) 19XB05006003		
59 N	HI-VOLT CONDUCTOR (#4 STRAND WIRE)	(3) 02XB35028401		
60	HI-VOLTAGE TERMINAL ASY. (NEW STYLE)	(3) 02XB05003001		
INCLUDES: ITEMS 61 - 63				
61	HI-VOLTAGE TERMINAL O-RING (INNER)	(3) KK71EW325		
62	HI-VOLTAGE TERMINAL O-RING (OUTER)	(3) KK71EW311		
63	HI-VOLTAGE TERMINAL REBUILD KIT	19XR660018		
64	HI-VOLTAGE TERMINAL STUD	(3) 02XB05003101		
65	O-RING (1.50"O.D.)(TERM. PLT)	(2) KK71EW128		
66	SILENCER ASSEMBLY (FRONT)(SSN1593J)	02XB34009801		
INCLUDES: ITEMS 67 - 69				
67 N	SEGMENT ASSEMBLY	(6) 02XB34009901		
68 N	SEAL PLUG	(8) CA64AM225		
INCLUDES: ITEM 69				
69 N	O-RING	(8) KK71EW910		
70A	BRASS ORIFICE (.102) (R22)	(2) 02XB35020501		

PARTS LIST CATALOG

PARTS LIST PAGE: 002

CATALOG NO. : REV.
SUPERSEDES : REV.

NOTE: SEE "CATALOG NOTES" ON LAST PAGE FOR EXPLANATION OF SYMBOLISM.



HERMETIC CENTRIFUGAL
LIQUID CHILLER (R-22 &
R-134A)

19XL

SIZE: 002 005
SERIES: 0

ITM	PART DESCRIPTION	19XL002-005	
		COMPRESSORS	
COMPRESSOR GROUP			
70B	BRASS ORIFICE (.150) (R134A)	(2)	02XB35020502
71A	MOTOR SPRAY NOZZLE (PSN3995J)		02XB34002001
	USED ON CB-CR 50/60HZ (R22 & R134A) LOW VOLT. MOTORS (SEE S/B C9716).		
71B	MOTOR SPRAY NOZZLE (PSN3995J)		02XB34002002
	USED ON CB-CD 60HZ & CB-CN 50HZ (R134A) MED. VOLT. MOTORS		
	CB-CR & CE-CR 50/60HZ (R22) MED. VOLT. MOTORS (SEE S/B C9716).		
71C	MOTOR SPRAY NOZZLE (PSN3995J)		02XB34002003
	USED ON CP-CR 50/60HZ (R134A) MED. VOLT. MOTORS (SEE S/B C9716).		
71D	MOTOR SPRAY NOZZLE (SSN3995J)		02XB34013201
	USED ON CB-CP 50/60HZ (R134A) & CB-CR 50/60HZ (R22) LOW VOLT. MOTORS.		
71E	MOTOR SPRAY NOZZLE (SSN3995J)		02XB34013202
	USED ON CQ-CR 50/60HZ (R134A) LOW VOLT. MOTORS (SEE S/B C9716).		
71F	MOTOR SPRAY NOZZLE (SSN3995J)		02XB34013203
	USED ON CB-CD 50/60HZ (R22 & R134A) MED. VOLT. MOTORS (SEE S/B C9716).		
71G	MOTOR SPRAY NOZZLE (SSN3995J)		02XB34013204
	USED ON CE-CR 50/60HZ (R22) MED. VOLT. MOTORS (SEE S/B C9716).		
71H	MOTOR SPRAY NOZZLE (SSN3995J)		02XB34013205
	USED ON CE-CR 50/60HZ (R134A) MED. VOLT. MOTORS (SEE S/B C9716).		
72AN	MOTOR COOLING ORIFICE (.106 DIA)		02XB35035501
	USED ON CQ-CR 50/60HZ (R134A) LO-VOLT. & CE-CR 50/60HZ (R22) HI-VOLT.		
72BN	MTR COOLING ORIFICE (.153 DIA)(NOTE)		02XB35035502
	USED ON CE-CR 60HZ & CP-CR 50HZ (R134A) HIGH VOLT. MOTORS.		
73	OIL CHARGE VALVE (3/8"NPT)		EP23LA155
74	ANGLE VALVE (7/8"ODS)		448-833
75	ROLL PIN (1/4"OD X 3/4"LG)		AK14CA168
76	POSITIONING WASHER (OIL HEATER)		02XB35020901
77	CONNECTOR,ELL(3/4 X 1 1/16-12)W.O RI	(2)	02XB05000701
	INCLUDES: ITEM 78		
78	O-RING,ELL CONNECTOR		KK71EW912
79	TRANSDUCER,OIL PRESSURE		HK05YZ007
80	VALVE (SCHRADER)	(4)	06DA403044
81	STR CONNECTOR(3/8 X 9/16-18)W.O RING	(2)	02XB05000301
	INCLUDES: ITEM 82		
82	O-RING,STR. CONNECTOR		KK71EW906
83	ELL CONNECTOR(3/8 X 9/16-18)W.O RING	(3)	02XB05000601
	INCLUDES: ITEM 84		
84	O-RING,ELL. CONNECTOR		KK71EW906
85	STRAINER	(2)	KH11NG070
	NOTE: ITEM # 86 IS A COMPLETE PACKAGE TO UPDATE UNIT TO THE CURRENT		
	EJECTOR,IF YOU ALREADY HAVE UPDATED OR HAVE WHAT IS SHOWN IN PICTORIAL		
	JUST SELECT REPLACEMENT PARTS FROM PKG, YOU DO NOT NEED TO ORDER ENTIRE		
	PACKAGE UNLESS YOU HAVE OLDER UNIT THAT HAS NOT YET BEEN UPDATED.		
86	EJECTOR KIT (TO REPLACE NLA EJECTOR)		19XL660006
	INCLUDES: ITEMS 87 - 91		
87 N	EJECTOR (SSN4292J)		02XB05002201
88 N	FILTER (LOW SIDE,OIL RECLAIM)		KH62ME060
89 N	STRAINER (HI SIDE)		KH11NG070
90 N	CONNECTOR (3/8 X 9/16-18)W.O RING		02XB05000301
91 N	O-RING,CONNECTOR		KK71EW906
92	EJECTOR ADAPTER(PSN4292J) W.O-RING		02XB05002101
	NOTE: USED WITH NLA EJECTOR ONLY.		
93	O-RING,EJECTOR CONNECTOR		KK71EW906
94	STR CONNECTOR(3/8 X 9/16-18)W.O RING		EC31EZ120
	INCLUDES: ITEM 95		

PARTS LIST CATALOG

PARTS LIST PAGE: 003

CATALOG NO. : REV.
SUPERSEDES : REV.

NOTE: SEE "CATALOG NOTES" ON LAST PAGE FOR EXPLANATION OF SYMBOLISH.



HERMETIC CENTRIFUGAL
LIQUID CHILLER (R-22 &
R-134A)

19XL

SIZE: 002 005
SERIES: 0

ITM	PART DESCRIPTION	19XL002-005			
		COMPRESSORS			
COMPRESSOR GROUP					
95	O-RING,STR. CONNECTOR	KK71EW906			
96	STRAIGHT CONNECTOR (SHORT)W.O RING	02XB05000501			
	INCLUDES: ITEM 97				
97	O-RING,ELL CONNECTOR	KK71EW912			
98	STR CONNECTOR(LONG)(3/4 X 1 1/16-12)	02XB05000201			
	INCLUDES: ITEM 99				
99	O-RING,ELL CONNECTOR	KK71EW912			
100	INLINE STRAINER/FITTING	02XB05001001			
	INCLUDES: ITEM 101				
101	O-RING,INLINE STRAINER	KK71EW906			
102	CHECK VALVE	EC37BM122			
103	EXPANSION VALVE,OIL COOLER (3/8")	02XB35018301			
104	SOLENOID VALVE (3/8" ODS)	(3) FF11JE121			
105	SOLENOID COIL (24V 50/60 HZ)	(3) P510-AMG/24V			
106	HIGH DISCH CUTOFF SW (OPEN 263F)	HK02ZA260			
107A	TEMP. SENSOR,COMPR. DISCHARGE	HH79N2059			
107B	TEMP. SENSOR,OIL SUMP	HH79N2047			
COMPRESSOR TRANSMISSION ASSEMBLY					
108A	BEARING,DRIVE END (LO-VOLT)	02XB35022401			
108B	BEARING,DRIVE END (HI-VOLT)(SEE NOTE)	02XB35018401			
	Note: used in hi-volt machines with a serial number prior to 4092J.				
108C	BEARING,DRIVE END (HI-VOLT)(SEE NOTE)	02XB35022401			
	Note: used in hi-volt machines with a S/N after 4092J & prior to 2798J				
108D	BEARING,DRIVE END (HI-VOLT)(SEE NOTE)	02XB35035701			
	Note: used in hi-volt machines with a serial number after 2798J.				
109A	COMPR END LO-SPEED BEARING(SEE NOTE)	02XB35022501			
	Note: used in lo-volt machines with a serial number prior to 1793J.				
109B	COMPR END LO-SPEED BEARING(SEE NOTE)	02XB35027201			
	Note: used in lo-volt machines with a serial number after 1793J.				
109C	COMPR END LO-SPEED BEARING(SEE NOTE)	02XB35018501			
	Note: used in hi-volt machines with a serial number prior to 4092J.				
109D	COMPR END LO-SPEED BEARING(SEE NOTE)	02XB35022501			
	Note: used in hi-volt machines with a S/N after 4092J & prior to 2093J				
109E	COMPR END LO-SPEED BEARING(SEE NOTE)	02XB35027201			
	Note: used in hi-volt machines with a S/N after 2093J & prior to 2798J				
109F	COMPR END LO-SPEED BEARING(SEE NOTE)	02XB35035801			
	Note: used in hi-volt machines with a serial number after 2798J.				
110	LO-SPEED OIL CATCHER	02XB35027501			
111A	HI-SPEED BEARING (SEE NOTE)	02XB35016701			
	Note: used in machines with a serial number prior to 4092J.				
111B	HI-SPEED BEARING (SEE NOTE)	02XB35022601			
	Note: used in machines with a S/N after 4092J & prior to 2093J.				
111C	HI-SPEED BEARING (SEE NOTE)	02XB35027301			
	Note: used in machines with a serial number after 2093J.				
112	HI-SPEED OIL CATCHER	02XB35027601			
113	SHAFT LABYRINTH (SEE SB C9403)	02XB34007501			
114 N	ROLL PIN (PSN6192J)	AX14CA064			
115	SEAL RING (SEE S89308)	02XB34007501			
116A	ROTOR/GEAR ASSEMBLY 60 HZ	PER JOB			
116B	ROTOR/GEAR ASSEMBLY 50 HZ	PER JOB			
	INCLUDES: ITEMS 117 - 118				
116C	GEAR,LO-SPEED (60HZ)	02XB35002001			
116D	GEAR,LO-SPEED (50HZ)	02XB35002002			
117	RING,RETAINING	02XB35005201			

PARTS LIST CATALOG

PARTS LIST PAGE: 004

CATALOG NO. : REV.
SUPERSEDES : REV.

NOTE: SEE "CATALOG NOTES" ON LAST PAGE FOR EXPLANATION OF SYMBOLISM.



HERMETIC CENTRIFUGAL
LIQUID CHILLER (R-22 &
R-134A)

19XL

SIZE: 002 005
SERIES: 0

ITM	PART DESCRIPTION	19XL002-005	
		COMPRESSORS	
COMPRESSOR TRANSMISSION ASSEMBLY			
118	KEY	(2)	02XB35004601
119A	SHROUD ASSEMBLY (50/60 HZ)(PSN1793J)		02XB34007201
119B	SHROUD ASSEMBLY (50/60 HZ)(SSN1793J)		02XB34010001
120	STRIPPER (GEAR OIL) THRUST BEARING ASSEMBLY		02XB35014401
121A	HI-SPEED SHAFT ASY. (60 HZ)(SEE NOTE		19XL660011
121B	HI-SPEED SHAFT ASY. (50 HZ)(SEE NOTE		19XL660012
	INCLUDES: ITEMS 122 - 132		
122A	IMPELLER SHAFT (60 HZ)		02XB35016401
122B	IMPELLER SHAFT (50 HZ)		02XB35016402
123	SLINGER		02XB35016301
124	THRUST BEARING ASSEMBLY		02XB660003
	INCLUDES: ITEM 125		
125	ROLL PIN	(12)	AX14CA035
126	THRUST SHOE ASSEMBLY (SET OF 6)		19DA23-203
127	SPACER RING		02XB35018101
128	SEAL RING (3.62" OD; .181" THK)		02XB35015901
129A	RETAINING RING (4.73" OD) SEE NOTE		02XB35018201
129B	RETAINING RING (5.45" OD) SEE NOTE		02XB35027401
	NOTE: ASSEMBLIES 121A & 121B INC IT# 129B IT# 129A IS INCLUDED AS A LOOSE PART. IT IS USED ON EARLIER ASSEMBLIES AND IS TO BE FIELD ASSEMBLED IN PLACE OF ONE FURNISHED ON ASSEMBLY FOR USE ON OLDER COMPR ASY. CHECK YOUR MACHINE TO SEE IF MACH REQUIRES #129A OR #129B		
130	LEVELING PAD	(12)	19D210052
131	EXTERNAL RETAINING RING		AU48AA511
132	ADJUSTING PAD PACKAGE GUIDE VANE & BLADE RING		19D23-841
133	BLADE RING ASSEMBLY		02XB34001401
	INCLUDES: ITEMS 134 - 143		
134	DRIVE PULLEY		02XB35003401
135	DRIVEN PULLEY	(6)	02XB35001701
136	IDLER PULLEY	(7)	19D211252
137	BUSHING	(14)	KT53XL066
138	PREMIXED BLADE	(7)	02XB34003301
139	GUIDE VANE CABLE (102 7/16" LG)		02XB35005301
140	TAPERED SHAFT (IDLER PULLEY)	(7)	02XB35005401
141	BOLT, SHOULDER (IDLER PULLEY)	(7)	AH27AM172
142	BUSHING (IDLER PULLEY)	(7)	KT53XL055
143	BAR (CABLE TENSION)		02XB35005501
144	BEARING HOUSING		19EA411032
145	SEAL HOUSING		02XB35008101
146	SEAL RETAINER (IT.#153 ALSO REQ'D)		19EA421042
147	DRIVE SHAFT (STM STL)		02XB35005601
148	"V" RING (INNER)		KK71HT016
149	"V" RING (OUTER)		KK71HT014
150	O-RING (2.50" OD)		KK71EW228
151	DRIVE SHAFT BUSHING		KT53XL093
152	WASHER		AU51YA391
153	PELLET (1/8" DIA NYLON)		19EA411031
154	ROLL PIN (11/16" LG)		AX14CA031
155	KEY		19D211391
156	ACTUATOR MOTOR (24V)		HF26DD024
156A	POTENTIOMETER		AD-718-701
157	MOUNTING PLATE (ABS)		02XB35005901

PARTS LIST CATALOG

PARTS LIST PAGE: 005

CATALOG NO. : REV.
SUPERSEDES : REV.

NOTE: SEE "CATALOG NOTES" ON LAST PAGE FOR EXPLANATION OF SYMBOLISH.



HERMETIC CENTRIFUGAL
LIQUID CHILLER (R-22 &
R-134A)

19XL

SIZE: 002 005
SERIES: 0

ITM	PART DESCRIPTION	19XL002-005			
		COMPRESSORS			
GUIDE VANE & BLADE RING					
158	CHAIN GUARD (ABS)	02XB35006001			
159	CHAIN KIT #35 (3/8" PITCH)	19FA660016			
160	SPROCKET HUB	02XB35006101			
161	SPROCKET (DRIVE)	17FA5021712			
162	SPROCKET (SHAFT)	02XB35006202			
163	EXPANSION NUT #8 NYLON	(10) AI99RA101			
164	SET SCREW (5/16-18 X 1/2" LG)	(2) AE12AA196			
165	KEY	17FA5021782			
LUBRICATION PACKAGE					
166A	OIL PUMP ASY. (200/240-60) COPELAND	02XB34008901			
166B	OIL PUMP ASY. (380/480-60) COPELAND	02XB34008902			
166C	OIL PUMP ASY. (507/619-60) COPELAND	02XB34008905			
166D	OIL PUMP ASY. (220/240-50) COPELAND	02XB34008903			
166E	OIL PUMP ASY. (346/440-50) COPELAND	02XB34008904			
	NOTE: OIL PUMP ASSEMBLIES INCLUDE ITEMS THAT MAKE UP SERVICE OIL PUMP PACKAGE 169-182 AND ALSO INCLUDES ITEMS 183-193.				
166F	OIL PUMP ASY. (200/240-60) RELIANCE	02XB34008906			
166G	OIL PUMP ASY. (380/480-60) RELIANCE	02XB34008907			
166H	OIL PUMP ASY. (507/619-60) RELIANCE	02XB34008910			
166I	OIL PUMP ASY. (220/240-50) RELIANCE	02XB34008908			
166J	OIL PUMP ASY. (346/440-50) RELIANCE	02XB34008909			
	NOTE: THE SERVICE OIL PUMP PKGS ARE ONLY GOOD FOR COPELAND BRAND PUMPS. IF YOU HAVE A RELIANCE YOU MUST REPLACE ENTIRE PUMP ASSEMBLY.				
167AN	SERV. PKG. STATOR (COPELAND) (400-575V)	02XB34013801			
	NOTE: STATOR GOOD FOR 50HZ AND 60HZ.				
167BN	SERV. PKG. STATOR (COPELAND) (200-250V)	02XB34013802			
	NOTE: STATOR GOOD FOR 50HZ AND 60HZ.				
168AN	SERVICE PKG. ROTOR (COPELAND) (60HZ)	02XB34011401			
168BN	SERVICE PKG. ROTOR (COPELAND) (50HZ)	02XB34011402			
	INCLUDES: ITEMS 169 - 182				
169	MACHINE COVER	02XB35025501			
170	PUMP HOUSING	NSS			
171	OIL PUMP COVER	17CA611492			
172	PUMP SHAFT	02XB35025401			
173	ROTOR (COPELAND)	02XB05002401			
174	SLEEVE (LONG)	02XB35024601			
175	SLEEVE (SHORT)	02XB35024701			
176	PUMP VANE	(4) 02XB35025301			
177	CLAMPING RING	19D211011			
178	DOWEL PIN 1/4" DIA X 3/4" LG	(2) AX11AR168			
179	DOWEL PIN 3/16" DIA X 1 1/4" LG	(2) AX11AR132			
180	HEX HD CAP SCREW (1/2-13 X 4")	(2) NOT AVAILABLE			
181	SOCK. HD SCREW (5/16-18 X 3/4")	NOT AVAILABLE			
182	PIPE PLUG 1/8"	CA63AA001			
183	PLUG 3/8" (W/O-RING) (O-RING NLA)	(2) CA63AM101			
184	SET SCREW (1/4-20 X 7/16")	(2) AE64FR166			
185	O-RING (HERM TERM) (2 1/16" OD)	KK71EN134			
186	HERMETIC TERMINAL (5 PIN)	HY85FP032			
187	O-RING (6" OD)	KK71EN257			
188	O-RING (6.11/16" OD)	KK71EN165			
189	RELIEF VALVE ASSEMBLY (1/2" NPT)	02XB34012201			
190	O-RING (1 3/16" OD)	KK71EN023			
191	VALVE (3/8")	EP23LA155			
192	TERMINAL (50 HZ ONLY)	(5) HY94TW563			

PARTS LIST CATALOG

PARTS LIST PAGE: 006

CATALOG NO.: REV.
SUPERSEDES: REV.

NOTE: SEE "CATALOG NOTES" ON LAST PAGE FOR EXPLANATION OF SYMBOLISM.



HERMETIC CENTRIFUGAL
LIQUID CHILLER (R-22 &
R-134A)

19XL

SIZE: 002 005
SERIES: 0

ITM	PART DESCRIPTION	19XL002-005			
		COMPRESSORS			
LUBRICATION PACKAGE					
193	OIL COOLER (SEE NOTE)	02XB35031301			
	NOTE: ITEM #193 IS THE LATEST OIL COOLER USED & IS NOW THE ONLY ONE AVAILABLE. IF YOU HAVE EITHER OF THE 2 EARLIER COOLERS USED YOU MUST USE THE ADAPTER PKG BELOW IT#194. BOTH PREVIOUS COOLERS HAD TO BE MOUNTED UPSIDE DOWN TO GET OIL CONNS ON THE LEFT SIDE. NEW COOLER IS MOUNTED RIGHT SIDE UP WITH 7/8 OIL CONNS ON LEFT SIDE.				
194 N	OIL COOLER ADAPTER PACKAGE	19XL660013			
	INCLUDES: ITEMS 195 - 198				
195 N	OIL COOLER	02XB35031301			
196 N	OIL COOLER RETROFIT BRKT	(2) 19XL680003			
197	OIL COOLER BRACKET	(2) 02XB35031601			
198	HEX HD CAP SCREW	(4) AA06BR202			
199	O-RING (1 7/8"OD)	(2) KK71EW223			
200 N	FILTER KIT	02XB660004			
	INCLUDES: ITEMS 201 - 202				
201	FILTER CORE	KH09AZ003			
202	O-RING (4 5/8"OD)	KK71EW245			
203	ROD (FILTER SUPPORT)	02XB35015201			
204	HEX LOCK NUT (5/16-18)	AT55BA201			
205	FILTER RETAINER	02XB35014901			
CONTROL BOX GROUP					
206A	POWER PANEL ASSEMBLY (BASIC)	19XB04000101			
206B	POWER PANEL ASSEMBLY (OPTIONS)	19XB04000102			
	INCLUDES: ITEMS 207 - 222				
207	ENCLOSURE	19EX04001001			
208	TRANSFORMER (21 V) (T1)	HT01BD113			
209	TRANSFORMER (24 V) (T2,T3)	(2) HT01AW235			
210	WIRING ASY. (OPTIONS)(T4)	HT01BD113			
	INCLUDES: ITEMS 211 - 213				
211 N	TRANSFORMER (21V)	HT01BD113			
212 N	PLUG	HY06MP001			
213 N	PIN	(3) HY57MP019			
214	CONTACTOR (3 POLE) (OIL HEATER)	HN53CD024			
215	CONTACTOR (3 POLE W/AUX)(OIL PUMP)	HN53HC023			
216	SAFETY SWITCH,OIL (SSN4793J)	HK06UB011			
217	BARRIER	19XB05000401			
218	TERMINAL BLOCK	19XB05002301			
219	VOLTAGE SELECTOR SWITCH	HR6722125			
220	WIRE HARNESS (15 WIRE)5AMP(F18,19)	19XB04002501			
221	GROUND LUG	HY90HR001			
222	POWER PANEL BOX COVER (W/SCHEMATIC)	19XB04001301			
223A	CONTROL PANEL ASSEMBLY (BASIC)	19XB04007801			
223B	CONTROL PANEL ASSEMBLY (OPTIONS)	19XB04007802			
	INCLUDES: ITEMS 224- 237				
224	PANEL ASSEMBLY	19XB04000401			
	INCLUDES: ITEMS 225 - 226				
225	FRAME ASSEMBLY	19XB04000501			
226	HINGE	19XB05001201			
227	DOOR PANEL ASY.	19EX04000501			
228	CAM LOCK (W/KEYS)	KA19NL010			
229	LID ASY. (LOCAL INTERFACE DISPLAY)	CES0130036			
230 N	LID BATTERY (SEE SB C9623)	CECO120803-01			
230A	BACK LIGHT (USED W/BACK LID LID)	HY19AD005			
231	RELAY BOARD (6 PACK)	HK35AA003			

PARTS LIST CATALOG

PARTS LIST PAGE: 007

CATALOG NO. : REV.
SUPERSEDES : REV.

NOTE: SEE "CATALOG NOTES" ON LAST PAGE FOR EXPLANATION OF SYMBOLISM.



HERMETIC CENTRIFUGAL
LIQUID CHILLER (R-22 &
R-134A)

19XL

SIZE: 002 005
SERIES: 0

ITM	PART DESCRIPTION	19XL002-005	
		COMPRESSORS	
CONTROL BOX GROUP			
232	POWER SUPPLY (5 VDC) (TRANSDUCERS)		HK35AA002
233	MODULE ASY. (PSIO)		19XB04008913
233A	PSIO BATTERY (SEE SB C9623)		CECD120A03-01
234	CIRCUIT BREAKER (3.2 AMPS)	(4)	HH83ZB004
235	RUBBER BUMPER	(2)	KA58HR001
236	WIRE HARNESS ASY. (15 WIRE)		19XB04002701
237	WIRE HARNESS ASY. (6 WIRE)		19XB04002401
	INCLUDES: ITEMS 238 - 239		
238	WIRE ASSEMBLY (RESISTORS)		19XB04003301
239	RESISTOR (10K 1/2 W)	(3)	HT21AZ110
240	TRANSDUCER CABLE ASY. PKG	(3)	19XB660003
	INCLUDES: ITEMS 241 - 243		
241	TRANS CABLE ASY. (VESSEL/OIL PRESS)		19XB660002
242	CABLE CONNECTOR		30GT510011
243	TERMINAL PIN	(3)	30GT510010
244	CABLE ASY., SENSOR (COMPR DISCH TEMP)		19XB04003501
245	CABLE ASY., SENSOR (OIL SUMP TEMP)		19XB04003502
246 N	CONNECTOR PLUG (3 PIN) (SIDE PSIO)		HY84EE003
247 N	CONNECTOR PLUG (4 PIN) (SIDE PSIO)	(3)	HY84EE004
248	CONNECTOR PLUG (18 PIN)	(3)	HY84EE021
249	CONNECTOR PLUG (6 PIN)		HY06MP106
250	MODULE (INPUT)(OPTIONS PANEL ONLY)		HK50AA006
251	CABLE ASSEMBLY (SENSORS)	(4)	HH79NZ048
252	TEMPERATURE SENSOR (W/BOX NOZZLE)	(4)	HH79NZ047
253	PRESSURE TRANSDUCER (COOLER/COND)	(2)	HK05Y2007
254	SENSOR BOX COVER (MOTOR/THRUST BRG)	(2)	HX08F2050
255 N	STARTER MANAGEMENT MODULE (SMM)		CESD121319-01
MACHINE ARRANGEMENT & PIPING			
256	VALVE,BALL (5/8")		900613
257	INDICATOR LABEL (ACTUATOR POSITION)		02XB35001901
258	8" RING GASKET (SUCTION LINE)	(2)	19XB55002503
259	O-RING (2 5/8"O.D.)	(5)	KK71EW229
260	VALVE,COND. ISOLATION (6") (DISCH.)		ER39MZ812
261	GASKET,RING (6") (DISCH LINE)	(3)	19XB55002502
262	DISCH VALVE LOCKING PLATE		23XL25001901
263	BALL VALVE 5/8"ODS (MTR COOLING)		900205
264	MOISTURE INDICATOR 5/8"ODS		KM43BS062
265	REFRIGERANT FILTER 3/8"MEI		KH42ME060
266	FILTER DRIER 5/8"MEI		P502-8415
267	FLARE ELBOW (5/8")		DD41CA301
268	FLARE NUT (5/8")		DD01CA301
269	FLARE GASKET (5/8")		DD24FA301
270	CONNECTOR ELL (3/8 X 9/16-18)		02XB05000601
	INCLUDES: ITEM 271		
271	O-RING,ELL. CONNECTOR		KK71EW906
272	1" BALL VALVE (REF.CHARGE)		EP71CG306
273A	VALVE,COOL. ISOLATION(2-1/8)		EP71BA511
273B	VALVE,COOL. ISOLATION(3-1/8) OLD STY		EM13FA520
	NOTE: THIS 3-1/8" VALVE WAS USED IN EARLIER VERSION OF THE ISOLATION VALVE AREA DESIGN, TO UPDATE TO THE LATEST DESIGN ORDER KIT NUMBER 99TA550132, OR REFER TO SERVICE BULLETIN C9403.		
273C	GASKET,RING (2") COOLER SIDE,OLD STY		19XB55002501
274	COOLER INLET GASKET (PSN4492.J)		GASKET-4-5
275	BACK PRESS VALVE (PSN4192.J)		NLA USE #274/278

PARTS LIST CATALOG

PARTS LIST PAGE: 008

CATALOG NO.: REV.
SUPERSEDES: REV.

NOTE: SEE "CATALOG NOTES" ON LAST PAGE FOR EXPLANATION OF SYMBOLISM.



HERMETIC CENTRIFUGAL
LIQUID CHILLER (R-22 &
R-134A)

19XL

SIZE: 002 005
SERIES: 0

ITM	PART DESCRIPTION	19XL002-005	
		COMPRESSORS	
MACHINE ARRANGEMENT & PIPING			
NOTE: TO REPLACE BACK PRESSURE VALVE SELECT EITHER ITEM #274 OR 278 AND INSTALL ORIFICE PLATE IN ITS PLACE. SELECT PER NOTE AT ITEM #282			
276	FLANGED ADAPTER 1 5/8" ("O" RING)	(3)	DK16CB302
277	FLANGED ADAPTER 1 5/8" (CTR BORED)		19XB55001701
278	FLANGED ADAPTER 2 1/8" (FLAT FACE)		DK16CB701
279	FLANGED ADAPTER 2 1/8" ("O" RING)	(2)	DK16CB702
280	FLANGED ADAPTER 1 5/8" (FLAT FACE)	(3)	DK16CB501
281	RELIEF VLV PKG.(1"IN/1 1/4"OUT)	(3)	19XB660001
NOTE: PSN2994J) MACH'S HAD TWO RELIEF VALVES MOUNTED ON COOLER & TWO MOUNTED ON THE CONDENSER. CURRENT UNITS HAVE ONE ON COOLER & TWO MOUNTED ON CONDENSER ON A 3 WAY VALVE. THE RELIEF VALVES ARE ALL THE SAME PART NUMBER.			
282 N	ORIFICE PLATE PACKAGE (R134A)		19XB660004
INCLUDES: ITEMS 283 - 284			
283	ORIFICE PLATE (.390)		19XB680003
284	O-RING		KK71EW229
285 N	ORIFICE PLATE PACKAGE (R22)		19XB660005
INCLUDES: ITEMS 286 - 287			
286	ORIFICE PLATE (.640)		19XB680004
287	O-RING (SAME AS # 255)		KK71EW229
288A	ORIFICE PLATE (.390) (SEE NOTE)		19XB45001601
288B	ORIFICE PLATE (.640) (SEE NOTE)		19XB45001602
NOTE: USE ITEM # 282A FOR ALL R22 MACHINES & R134A MACHINES CR-CD ALL VOLTAGES & CE-CN LOW VOLTAGES. USE ITEM #282B ON R134A MACHINES OF HIGH VOLTAGE WITH CE-CN MOTOR CODES & ALL VOLTAGES OF CP-CR MOTOR CODE.			
289	3 WAY SHUT-OFF VALVE (SSN2994J)		8024
290	COOLER TUBE (SEE NOTE)		PER JOB
290AN	COOLER TUBE QTY FR #40		201
290BN	COOLER TUBE QTY FR #41		227
290CN	COOLER TUBE QTY FR #42		257
290DN	COOLER TUBE QTY FR #43		290
290EN	COOLER TUBE QTY FR #50 & 55		314
290FN	COOLER TUBE QTY FR #51 & 56		355
290GN	COOLER TUBE QTY FR #52 & 57		400
290HN	COOLER TUBE QTY FR #53 & 58		445
NOTE: THE TUBE PART NUMBER FOR YOUR COOLER OR CONDENSER WILL BE PROVIDED WHEN YOU CONTACT CARRIER WITH YOUR MACHINE SERIAL NUMBER.			
291	CONDENSER TUBE (SEE NOTE)		PER JOB
291AN	COND TUBE QTY FR #40		218
291BN	COND TUBE QTY FR #41		247
291CN	COND TUBE QTY FR #42		279
291DN	COND TUBE QTY FR #43		315
291EN	COND TUBE QTY FR #50 & 55		347
291FN	COND TUBE QTY FR #51 & 56		387
291GN	COND TUBE QTY FR #52 & 57		432
291HN	COND TUBE QTY FR #53 & 58		484
292	SCHRADER VALVE	(5)	06DA603844
293	1/2" NPT BALL VALVE	(2)	EP71C0183
294	ELL CONNECTOR (3/4 X 1 1/16-12)		02XB05000701
INCLUDES: ITEM 295			
295	O-RING		KK71EW912
296	ELL CONNECTOR (3/8 X 9/16-18)		02XB05000601
INCLUDES: ITEM 297			
297	O-RING		KK71EW906

PARTS LIST CATALOG

PARTS LIST PAGE: 009

CATALOG NO.:

REV.

SUPERSEDES :

REV.

NOTE: SEE "CATALOG NOTES" ON LAST PAGE FOR EXPLANATION OF SYMBOLISM.



HERMETIC CENTRIFUGAL
LIQUID CHILLER (R-22 &
R-134A)

19XL

SIZE: 002 005
SERIES: 0

ITM	PART DESCRIPTION	19XL002-005			
		COMPRESSORS			
MACHINE ARRANGEMENT & PIPING					
298	FLOAT VALVE CHAMBER GSKT (FA TYPE)		09XB55006401		
299	GAUGE 3 1/2" BOTTOM CONN (30"-0-400)		KM03AF300		
300	GAUGE 2 1/2" BACK CONN (30"-0-400)	(2)	KM03AC256		
301A	FLOAT VALVE ASY. (CODE # 83) FA TYPE		09XB04000701		
301B	FLOAT VALVE ASY. (CODE # 86) FA TYPE		09XB04000702		
	INCLUDES: ITEMS 302 - 305				
302 N	FLOAT ARM ASSEMBLY		17FA105122		
303 N	FLOAT BALL 8" DIA. 3/8" NPT		09XB05001901		
304 N	SHAFT COLLAR	(2)	17FA1051522		
305 N	BALL BEARING	(2)	KT018G060		
306A	LINEAR FLOAT VALVE (R22)(SSN4592J)		09XB04004901		
306B	LINEAR FLOAT VALVE (R134A) (SSN4592J)		09XB04005101		
307	FLOAT VALVE SCREEN ASY.		09XB04000901		
308	FLOAT VALVE SCREEN GASKET		09XB15002601		
	NOTE: LATER MODELS (AFTER 1995) NO LONGER COME W/ITEM #308. YOU DO NOT HAVE TO REPLACE IT ON UNITS PRIOR TO DATE SHOWN.				
309	BUTTON HEAD SCREW #10-24	(8)	AA28FR124		
310	FLOAT VALVE CHAMBER GSKT (LINEAR)		09XB45001901		
310A	SCREW,HEX HEAD (1/2-13 X 2-1/2 LG)	(16)	AA06GS297		
311A	COOL W/B GSKT NIH 150/300 PSI FR #4	(2)	10XB45000601		
311B	COOL W/B GSKT NIH 150/300 PSI FR #5	(2)	10XB55001801		
311C	COOL W/B GSKT MAR:NOZ END:FR4:150/300		10XB45001501		
311D	COOL W/B GSKT MAR:PLAIN:FR4:150/300		09XB55009101		
311E	COOL W/B GSKT MAR:NOZ END:FR5:150/300		10XB55003801		
311F	COOL W/B GSKT MAR:PLAIN:FR5:150/300		10XB55003501		
312A	COND W/B GSKT NIH 150/300 PSI FR #4	(2)	09XB45001101		
312B	COND W/B GSKT NIH 150/300 PSI FR #5	(2)	09XB55001801		
312C	COND W/B GSKT MAR:NOZ END:FR4:150/300		09XB45002401		
312D	COND W/B GSKT MAR:PLAIN:FR4:150/300		09XB45002801		
312E	COND W/B GSKT MAR:NOZ:FR5:150/300		09XB55008401		
312F	COND W/B GSKT MAR:PLAIN:FR5:150/300		09XB55009101		
313	DIV.PLT.GSKT (25'ROLL)(CUT TO SUIT) HOT GAS BYPASS		19XB680001		
314	SOLE. VALVE (PILOT OPER.)HG8P 1 5/8"		FF28BS451		
315	REBUILD KIT,SOLENOID VALVE ITEM# 325		KS-E42		
316	PILOT RELAY 24V SPST PUMPDOWN ASSEMBLY		HM61KK324		
317A	PUMPDOWN ASY. (208-3-60) (R134A)		19EA611113		
317B	PUMPDOWN ASY. (230-3-60) (R134A)		19EA621113		
317C	PUMPDOWN ASY. (400/460-3-50/60) (R134A)		19EA631113		
317D	PUMPDOWN ASY. (575-3-60) (R134A)		19EA661113		
317E	PUMPDOWN ASY. (208-3-60) (R22)		19XB04280601		
317F	PUMPDOWN ASY. (230-3-60) (R22)		19XB04280602		
317G	PUMPDOWN ASY. (400/460-3-50/60) (R22)		19XB04280603		
317H	PUMPDOWN ASY. (575-3-60) (R22)		19XB04280604		
318A	COMPRESSOR ASY. (208/230-3-60)		06DM8086GC3250		
318B	COMPRESSOR ASY. (400/460-3-50/60)		06DM8086GC3650		
318C	COMPRESSOR ASY. (575-3-60)		06DM8086GC3150		
319 N	GASKET SET		6D43172		
320 N	VALVE PLATE PACKAGE (1-13/16" BORE)		NO LONGER AVAILABLE		
	INCLUDES: ITEMS 320A - 320G.				
320AN	VALVE PLATE ASY (L.H.BANK)		NO LONGER AVAILABLE		
320BN	SUCTION VALVE	(2)	6D451072		
320CN	GASKET,VALVE PLATE		6D401073		

PARTS LIST CATALOG

PARTS LIST PAGE: 010

CATALOG NO. : REV.
SUPERSEDES : REV.

NOTE: SEE "CATALOG NOTES" ON LAST PAGE FOR EXPLANATION OF SYMBOLISM.



HERMETIC CENTRIFUGAL
LIQUID CHILLER (R-22 &
R-134A)

19XL

SIZE: 002 005
SERIES: 0

ITM	PART DESCRIPTION	19XL002-005			
		COMPRESSORS			
PUMPDOWN ASSEMBLY					
320DN	GASKET,CYLINDER HEAD		05GA502213		
320EN	SPRING,SUCTION VALVE POSITIONING	(2)	6D401021		
320FN	DISCHARGE VALVE	(2)	6D751062		
320GN	DISCHARGE VALVE STOP	(2)	6D751072		
321 N	VALVE PLATE PACKAGE (2" BORE)		06DA660120		
	INCLUDES: ITEMS 321A - 321J.				
321AN	VALVE PLATE ASY.		06DA404674		
321BN	GASKET,VALVE PLATE		05DA500153		
321CN	GASKET,CYLINDER HEAD (PLAIN)		05GA502213		
321DN	GASKET,CYLINDER HEAD (S.C.O.U.)		05GA502223		
321EN	SUCTION VALVE	(2)	06DA502903		
321FN	SPRING,SUCTION VALVE POSITIONING	(2)	6D401021		
321GN	GASKET,CYLINDER HEAD (CENTER BAN		05GA502173		
321HN	GASKET,VALVE PLATE (LESS 1 PORT)		06DA502923		
321.N	DOMEL PIN		7J16032		
336 N	PISTON & PIN PACKAGE	(2)	6D68962		
337 N	ECCENTRIC STRAP	(2)	5D401372		
338 N	COMPRESSION RING	(2)	AU50CP355		
340 N	BEARING HEAD ASY.		06DA660060		
341	OIL FILTER ASY.		6D40103		
342	SERVICE VALVE PACKAGE (SUCTION)		5F20660002		
	INCLUDES: ITEMS 343 - 346				
343	VALVE (5/8" ODS)		NOT SOLD SEPARATELY		
344	GASKET,SUCTION VALVE		6D231421		
345	BOLT,HEX. HEAD		NOT SOLD SEPARATELY		
346	BUSHING (5/8" X 1/2")		NOT SOLD SEPARATELY		
347	SERVICE VALVE PACKAGE (DISCHARGE)		06DA660060		
	INCLUDES: ITEMS 348 - 350				
348	VALVE (5/8" ODS)		NOT SOLD SEPARATELY		
349	GASKET,DISCHARGE VALVE		6D231421		
350	BOLT,HEX. HEAD		NOT SOLD SEPARATELY		
351	CONDENSER ASSEMBLY		19EA41531		
	INCLUDES: ITEMS 352 - 353				
352	TRY COCK ASSEMBLY		7F0132		
353	VALVE,LIQUID		EP12BH211		
354	COMPR.OVERLOAD(30A)(FURNAS-MAN.RESET		HN68JX003		
355A	OVERLOAD HEATER (208V)	(3)	HN71JC050		
355B	OVERLOAD HEATER (230V)	(3)	HN71JC049		
355C	OVERLOAD HEATER (460V)	(3)	HN71JC036		
355D	OVERLOAD HEATER (575V)	(3)	HN71JC031		
356	CONTROL BOX COVER		07DA500002		
357A	CONTROL BOX ASSEMBLY (R22)		19EA42588		
357B	CONTROL BOX ASSEMBLY (R134A)		19EA41588		
	INCLUDES: ITEMS 358 - 364				
358	TERMINAL BLOCK		HY04EG017		
359	CONTACTOR		HN53CD115		
360A	SWITCH,PRESSURE (R22)		HK01UA187		
360B	SWITCH,PRESSURE (R134A)		HK01UA181		
361	SWITCH,TOGGLE		HR53ZA035		
362	FUSE HOLDER		HKP-HH		
363	FUSE (3 AMP)		AGC3		
364	GROMMET		KA56XM040		
365	SAFETY HEAD		EB51LR305		
366	OIL SEPERATOR		KH31L2008		

PARTS LIST CATALOG

PARTS LIST PAGE: 011

CATALOG NO.: REV.
SUPERSEDES : REV.

NOTE: SEE "CATALOG NOTES" ON LAST PAGE FOR EXPLANATION OF SYMBOLISM.



HERMETIC CENTRIFUGAL
LIQUID CHILLER (R-22 &
R-134A)

19XL

SIZE: 002 005
SERIES: 0

ITM	PART DESCRIPTION	19XL002-005			
		COMPRESSORS			
PUMPDOWN ASSEMBLY					
367	GASKET,OIL SEPERATOR	KY31LY003LA			
368	VALVE,DIAPHRAM (1/2")	(4) A-14841			
369	VALVE,ANGLE	EP23LA211			
370	GASKET,CAPSCREW (5/16")	(4) AU51YA003			
371	GASKET,FLARE (1/2")	DD26FA151			
372	SPRING,COMPRESSOR MOUNTING	(4) 50K21231			
373	SPRING CUP,COMPRESSOR MOUNTING MISCELLANEOUS GROUP	(4) 50K41221			
374 N	PAINT (SPRAY CAN)(HORIZON GREEN)	PH23GH017			
375 N	PAINT (SPRAY CAN)(GREY)	PH23GH022			
376 N	BRUSH,TUBE CLEANING (3/4" I.D.)	KC21AH105			
377	COMPR OIL (R22) (5 GAL/18.9 LITER)	PP23BZ101005			
378 N	COMPR OIL (R134A)(5 GAL/18.9 LITER)	PP23BZ103005			
379 N	INSULATION, SHEET (3/4 X 48 X 64)	QR0948486434			
384 N	FLOW SWITCH,DIFFERENTIAL PRESSURE	HK062C033			
385	OIL LINE REWORK KIT	19XL660015			
386 N	CONTROL MODULE OPTION UPGRADE KIT	19XB04005001			
NOTE: FOR ANY "TAKE APART KITS" OR "MAINTENANCE KITS" REFER TO "KITTING PROGRAM" OR CONTACT YOUR CARRIER REPRESENTATIVE.					